



STAGE 7B

9005
FUTURE PARK

TAYLOR ROAD

DAMBILINGWA ROAD

WINGAN LOOP

STAGE 5

WINGAN LOOP

STAGE 4

PROJECT
THE PARKS - STAGE 5
TITLE
**KASUNGU/TONGARIRO PARK RELEASE
INFRASTRUCTURE MASTER SERVICES**

DATE
09.10.25
SCALE
AS SHOWN
PROJ No.
IW317000
REV.
P5



THE PARKS

DISCLAIMER

THESE PLANS AND DRAWINGS ARE FOR CONCEPTUAL AND ILLUSTRATIVE PURPOSES ONLY. ALL DIMENSIONS, EASEMENTS, LEVELS AND SPECIFICATIONS ARE APPROXIMATE AND SUBJECT TO MODIFICATION, SUBSTITUTION, OR CHANGE WITHOUT PRIOR NOTICE.

NO RELIANCE SHOULD BE PLACED ON THESE PLANS FOR FINAL DECISIONS REGARDING PURCHASING, DESIGN, OR CONSTRUCTION. HOLTZE LAND COMPANY PTY LTD DISCLAIMS ALL LIABILITY FOR ANY ERRORS, OMISSIONS, OR INACCURACIES CONTAINED HEREIN AND ACCEPTS NO LIABILITY FOR LOSS SUFFERED BY ANY PERSON WHO RELIES ON THIS PLAN.

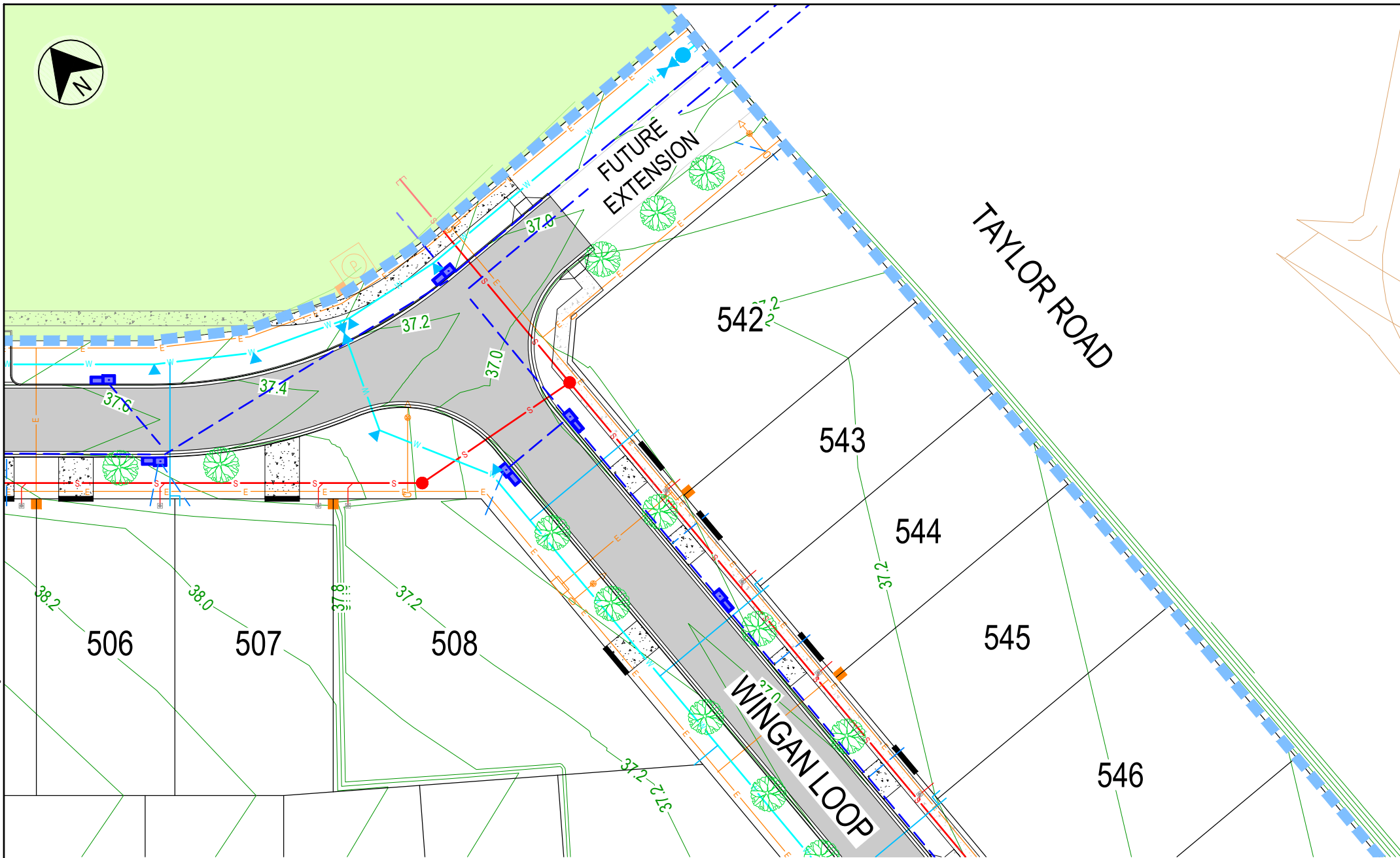
LEGEND

- S --- STORMWATER DRAINAGE
- W --- WATER RETICULATION
- S --- SEWERAGE
- E --- ELECTRICAL



ELECTRICAL PILLAR &
COMMS LEAD IN CONDUIT
3.5m WIDE NOM. DRIVEWAY

0 12 24 36m



PROJECT
THE PARKS - STAGE 5
TITLE
**KASUNGU/TONGARIRO PARK RELEASE
INFRASTRUCTURE MASTER SERVICES**

DATE
09.10.25
SCALE
AS SHOWN
PROJ No.
IW317000
REV.
P5



THE PARKS

DISCLAIMER

THESE PLANS AND DRAWINGS ARE FOR CONCEPTUAL AND ILLUSTRATIVE PURPOSES ONLY. ALL DIMENSIONS, EASEMENTS, LEVELS AND SPECIFICATIONS ARE APPROXIMATE AND SUBJECT TO MODIFICATION, SUBSTITUTION, OR CHANGE WITHOUT PRIOR NOTICE.

NO RELIANCE SHOULD BE PLACED ON THESE PLANS FOR FINAL DECISIONS REGARDING PURCHASING, DESIGN, OR CONSTRUCTION. HOLTZE LAND COMPANY PTY LTD DISCLAIMS ALL LIABILITY FOR ANY ERRORS, OMISSIONS, OR INACCURACIES CONTAINED HEREIN AND ACCEPTS NO LIABILITY FOR LOSS SUFFERED BY ANY PERSON WHO RELIES ON THIS PLAN.

LEGEND

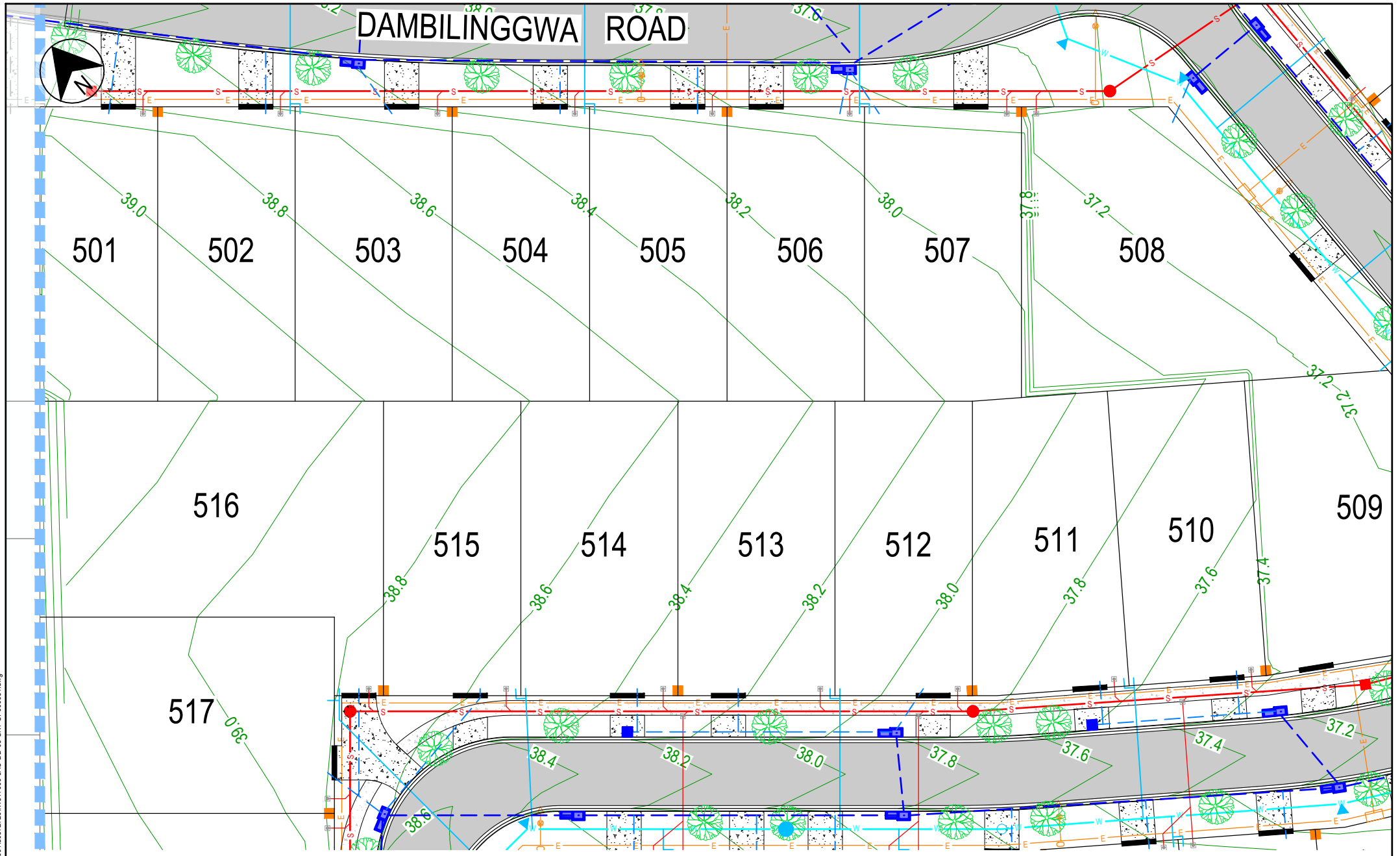
- STORMWATER DRAINAGE
- WATER RETICULATION
- SEWERAGE
- ELECTRICAL



ELECTRICAL PILLAR &
COMMS LEAD IN CONDUIT
3.5m WIDE NOM. DRIVEWAY

0 5 10 15m

DATE: 14/10/2025 3:43:02 PM LOGIN NAME: KRAKE, RYAN M
LOCATION: C:\temp\gw_work\apne_transp_001\0372720\IW317000-JAC-DD-05-SKT-CI-000031.dwg



PROJECT
THE PARKS - STAGE 5

TITLE
**KASUNGU/TONGARIRO PARK RELEASE
INFRASTRUCTURE MASTER SERVICES**

DATE
09.10.25

SCALE
AS SHOWN

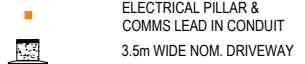
PROJ No.
IW317000

REV.
P5

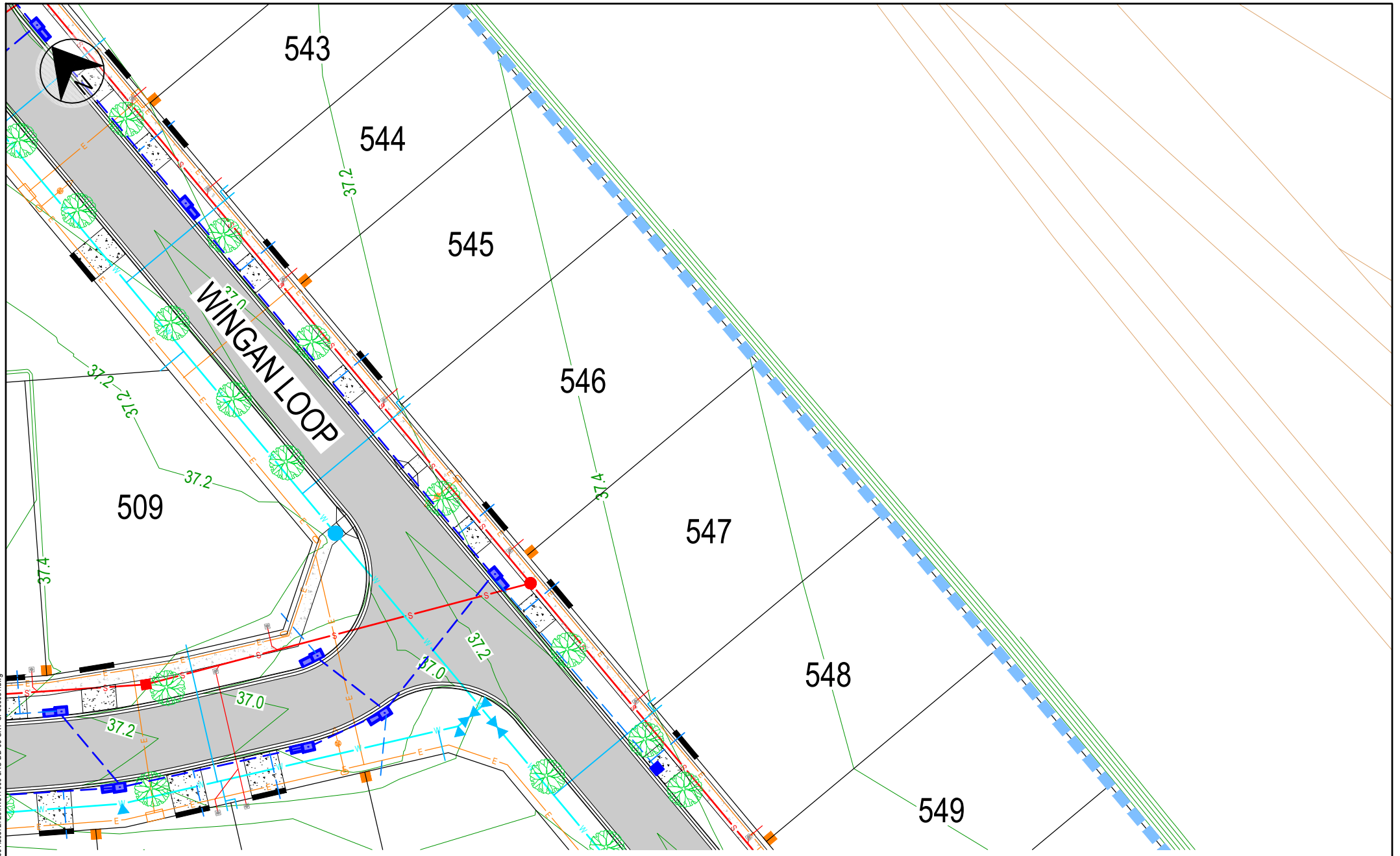


DISCLAIMER
THESE PLANS AND DRAWINGS ARE FOR CONCEPTUAL AND ILLUSTRATIVE PURPOSES ONLY. ALL DIMENSIONS, EASEMENTS, LEVELS AND SPECIFICATIONS ARE APPROXIMATE AND SUBJECT TO MODIFICATION, SUBSTITUTION, OR CHANGE WITHOUT PRIOR NOTICE.
NO RELIANCE SHOULD BE PLACED ON THESE PLANS FOR FINAL DECISIONS REGARDING PURCHASING, DESIGN, OR CONSTRUCTION. HOLTZE LAND COMPANY PTY LTD DISCLAIMS ALL LIABILITY FOR ANY ERRORS, OMISSIONS, OR INACCURACIES CONTAINED HEREIN AND ACCEPTS NO LIABILITY FOR LOSS SUFFERED BY ANY PERSON WHO RELIES ON THIS PLAN.

- LEGEND**
- STORMWATER DRAINAGE
 - WATER RETICULATION
 - SEWERAGE
 - ELECTRICAL



DATE: 14/10/2025 3:43:24 PM LOGIN NAME: KRAKE, RYAN M
LOCATION: C:\temp\gw_work\apne_transp_001\dwg372720\W317000-JAC-DD-05-SKT-CI-000031.dwg



PROJECT

THE PARKS - STAGE 5

TITLE

KASUNGU/TONGARIRO PARK RELEASE
INFRASTRUCTURE MASTER SERVICES

DATE

09.10.25

SCALE

AS SHOWN

PROJ No.

IW317000

REV.

P5



DISCLAIMER
THESE PLANS AND DRAWINGS ARE FOR CONCEPTUAL AND ILLUSTRATIVE PURPOSES ONLY. ALL DIMENSIONS, EASEMENTS, LEVELS AND SPECIFICATIONS ARE APPROXIMATE AND SUBJECT TO MODIFICATION, SUBSTITUTION, OR CHANGE WITHOUT PRIOR NOTICE.
NO RELIANCE SHOULD BE PLACED ON THESE PLANS FOR FINAL DECISIONS REGARDING PURCHASING, DESIGN, OR CONSTRUCTION. HOLTZE LAND COMPANY PTY LTD DISCLAIMS ALL LIABILITY FOR ANY ERRORS, OMISSIONS, OR INACCURACIES CONTAINED HEREIN AND ACCEPTS NO LIABILITY FOR LOSS SUFFERED BY ANY PERSON WHO RELIES ON THIS PLAN.

LEGEND

STORMWATER DRAINAGE

WATER RETICULATION

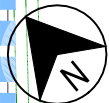
SEWERAGE

ELECTRICAL



ELECTRICAL PILLAR &
COMMS LEAD IN CONDUIT
3.5m WIDE NOM. DRIVEWAY

DATE: 14/10/2025 3:43:54 PM LOGIN NAME: KRAKE, RYAN M
LOCATION: C:\temp\gw_work\apne_transp_001\dwg317000-JAC-DD-05-SKT-CI-000031.dwg



518

519

520

521

522

WINGAN LOOP

523

524

525

526

527

528

5

541

540

539

538

537

536

DISCLAIMER

THESE PLANS AND DRAWINGS ARE FOR CONCEPTUAL AND ILLUSTRATIVE PURPOSES ONLY. ALL DIMENSIONS, EASEMENTS, LEVELS AND SPECIFICATIONS ARE APPROXIMATE AND SUBJECT TO MODIFICATION, SUBSTITUTION, OR CHANGE WITHOUT PRIOR NOTICE.

NO RELIANCE SHOULD BE PLACED ON THESE PLANS FOR FINAL DECISIONS REGARDING PURCHASING, DESIGN, OR CONSTRUCTION. HOLTZE LAND COMPANY PTY LTD DISCLAIMS ALL LIABILITY FOR ANY ERRORS, OMISSIONS, OR INACCURACIES CONTAINED HEREIN AND ACCEPTS NO LIABILITY FOR LOSS SUFFERED BY ANY PERSON WHO RELIES ON THIS PLAN.

LEGEND

- STORMWATER DRAINAGE
- WATER RETICULATION
- SEWERAGE
- ELECTRICAL



ELECTRICAL PILLAR &
COMMS LEAD IN CONDUIT
3.5m WIDE NOM. DRIVEWAY

PROJECT
THE PARKS - STAGE 5

TITLE
KASUNGU/TONGARIRO PARK RELEASE
INFRASTRUCTURE MASTER SERVICES

DATE
09.10.25

SCALE
AS SHOWN

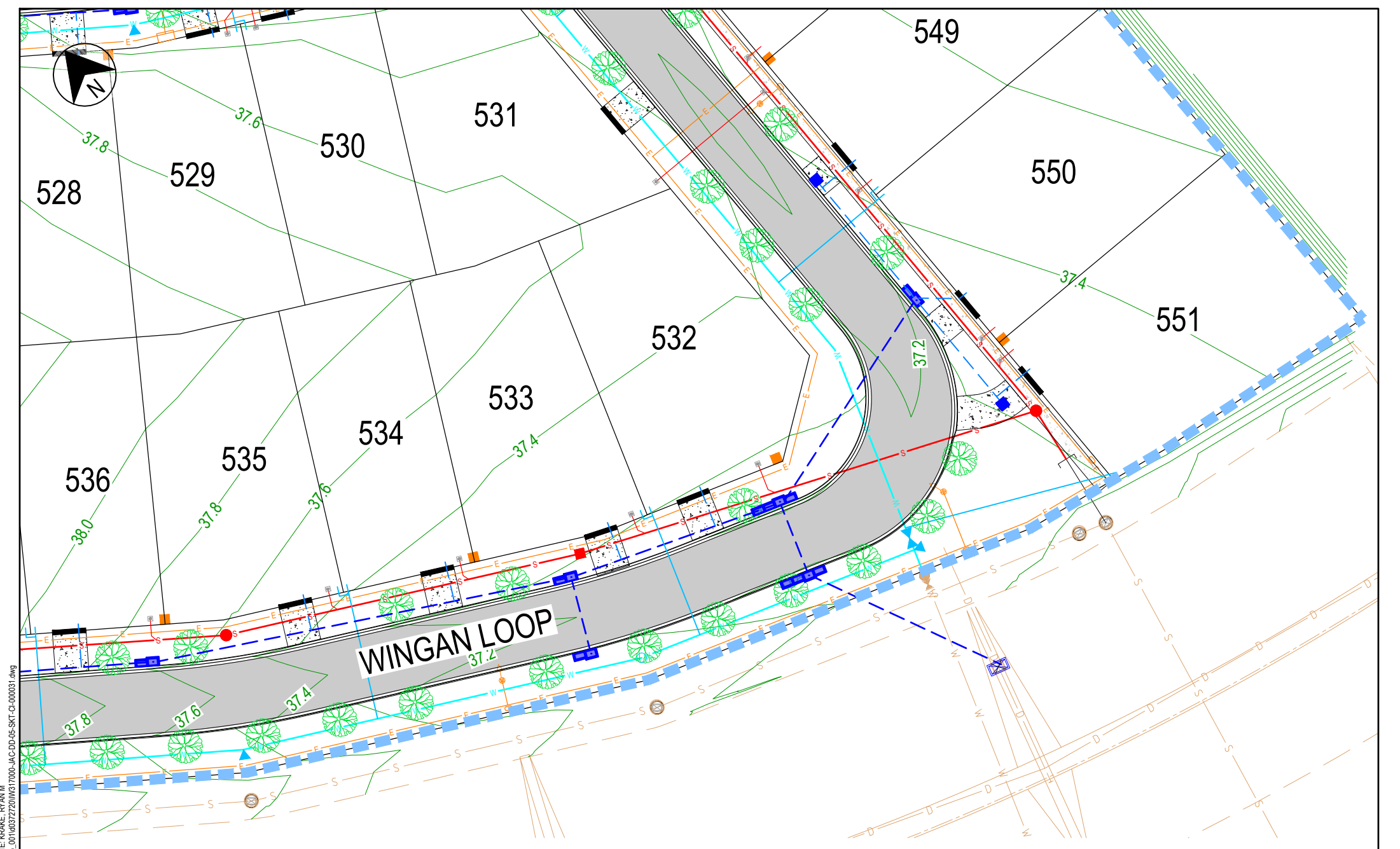
PROJ. No.
IW317000

REV.
P5



THE PARKS

0 5 10 15m



DATE: 14/10/2025 3:44:23 PM LOGIN NAME: KRAKE, RYAN M
LOCATION: C:\temp\work\kpnre_infra\001\0372720\W317000-JAC-DD-05-SKT-CI-000031.dwg

PROJECT

THE PARKS - STAGE 5

TITLE

KASUNGU/TONGARIRO PARK RELEASE
INFRASTRUCTURE MASTER SERVICES

DATE

09.10.25

SCALE

AS SHOWN

PROJ No.

IW317000

REV.

P5



DISCLAIMER
THESE PLANS AND DRAWINGS ARE FOR CONCEPTUAL AND ILLUSTRATIVE PURPOSES ONLY. ALL DIMENSIONS, EASEMENTS, LEVELS AND SPECIFICATIONS ARE APPROXIMATE AND SUBJECT TO MODIFICATION, SUBSTITUTION, OR CHANGE WITHOUT PRIOR NOTICE.
NO RELIANCE SHOULD BE PLACED ON THESE PLANS FOR FINAL DECISIONS REGARDING PURCHASING, DESIGN, OR CONSTRUCTION. HOLTZE LAND COMPANY PTY LTD DISCLAIMS ALL LIABILITY FOR ANY ERRORS, OMISSIONS, OR INACCURACIES CONTAINED HEREIN AND ACCEPTS NO LIABILITY FOR LOSS SUFFERED BY ANY PERSON WHO RELIES ON THIS PLAN.

LEGEND

STORMWATER DRAINAGE

WATER RETICULATION

SEWERAGE

ELECTRICAL



ELECTRICAL PILLAR &
COMMS LEAD IN CONDUIT
3.5m WIDE NOM. DRIVEWAY