



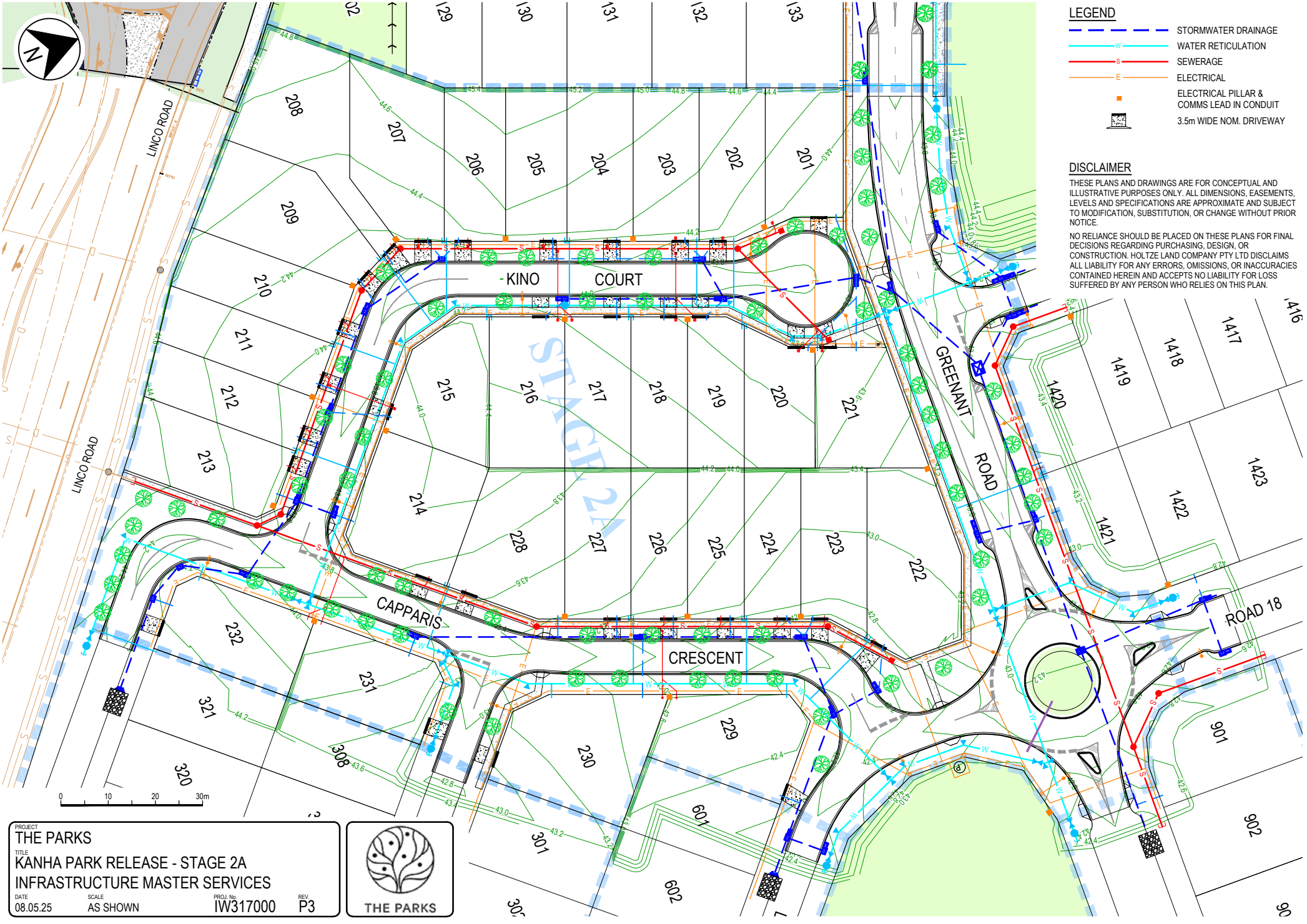
LEGEND

- STORMWATER DRAINAGE
- WATER RETICULATION
- SEWERAGE
- ELECTRICAL
- ELECTRICAL PILLAR & COMMS LEAD IN CONDUIT
- 3.5m WIDE NOM. DRIVEWAY

DISCLAIMER

THESE PLANS AND DRAWINGS ARE FOR CONCEPTUAL AND ILLUSTRATIVE PURPOSES ONLY. ALL DIMENSIONS, EASEMENTS, LEVELS AND SPECIFICATIONS ARE APPROXIMATE AND SUBJECT TO MODIFICATION, SUBSTITUTION, OR CHANGE WITHOUT PRIOR NOTICE.

NO RELIANCE SHOULD BE PLACED ON THESE PLANS FOR FINAL DECISIONS REGARDING PURCHASING, DESIGN, OR CONSTRUCTION. HOLTZE LAND COMPANY PTY LTD DISCLAIMS ALL LIABILITY FOR ANY ERRORS, OMISSIONS, OR INACCURACIES CONTAINED HEREIN AND ACCEPTS NO LIABILITY FOR LOSS SUFFERED BY ANY PERSON WHO RELIES ON THIS PLAN.



PROJECT

THE PARKS

TITLE

KANHA PARK RELEASE - STAGE 2A

INFRASTRUCTURE MASTER SERVICES

DATE

08.05.25

SCALE

AS SHOWN

PROJ No

IW317000

REV

P3



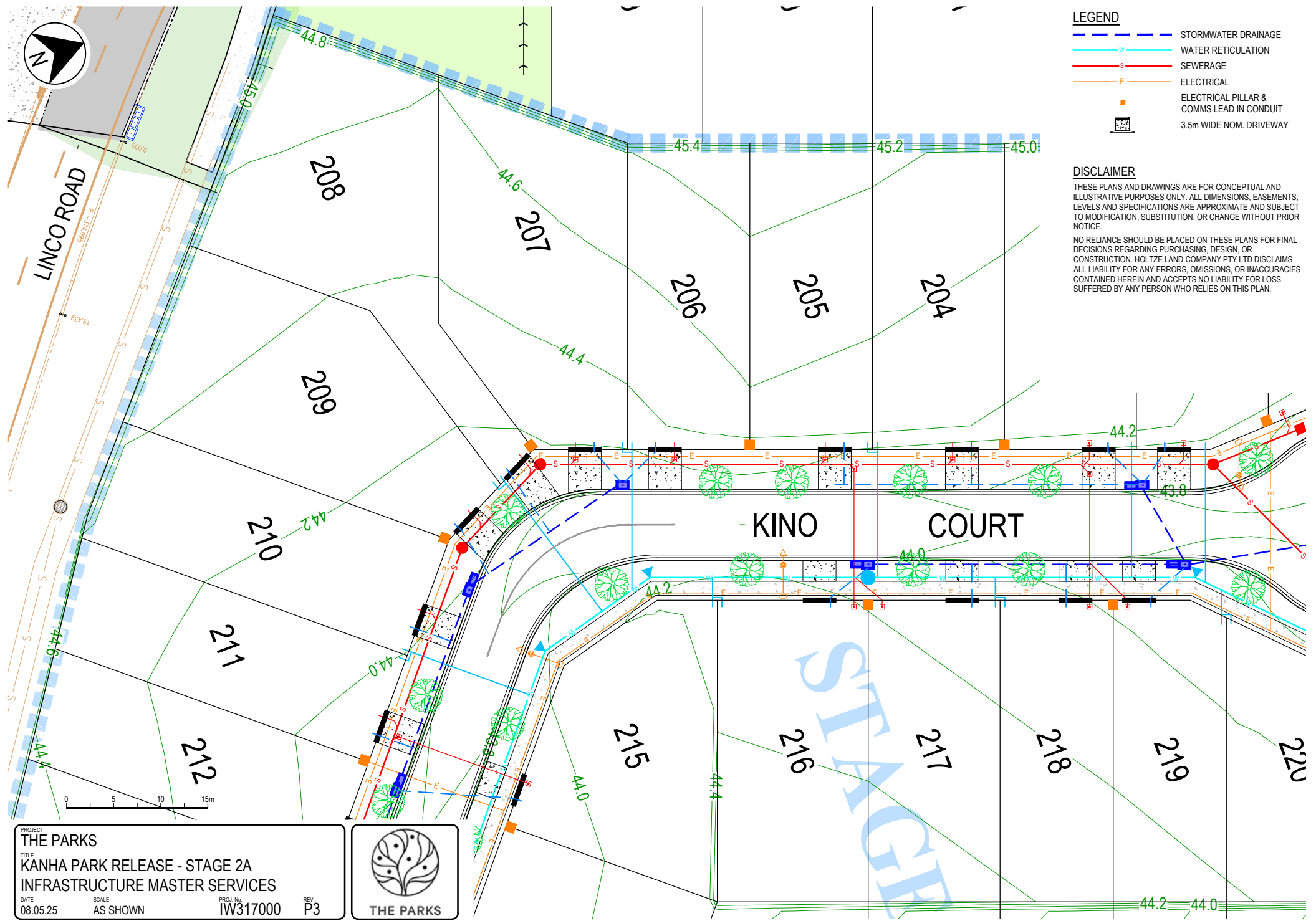
DATE: 8/05/2025 1:56:29 PM LOGIN NAME: BOUNDY, TROY A LOCATION: C:\temp\work\apne\_transp\_0011002149471W017000-JAC-DD-02-SKT-CI-000030.dwg



**LEGEND**

- STORMWATER DRAINAGE
- WATER RETICULATION
- SEWERAGE
- ELECTRICAL
- ELECTRICAL PILLAR & COMMS LEAD IN CONDUIT
- 3.5m WIDE NOM. DRIVEWAY

**DISCLAIMER**  
THESE PLANS AND DRAWINGS ARE FOR CONCEPTUAL AND ILLUSTRATIVE PURPOSES ONLY. ALL DIMENSIONS, EASEMENTS, LEVELS AND SPECIFICATIONS ARE APPROXIMATE AND SUBJECT TO MODIFICATION, SUBSTITUTION, OR CHANGE WITHOUT PRIOR NOTICE.  
NO RELIANCE SHOULD BE PLACED ON THESE PLANS FOR FINAL DECISIONS REGARDING PURCHASING, DESIGN, OR CONSTRUCTION. HOLTZE LAND COMPANY PTY LTD DISCLAIMS ALL LIABILITY FOR ANY ERRORS, OMISSIONS, OR INACCURACIES CONTAINED HEREIN AND ACCEPTS NO LIABILITY FOR LOSS SUFFERED BY ANY PERSON WHO RELIES ON THIS PLAN.



PROJECT  
**THE PARKS**  
TITLE  
**KANHA PARK RELEASE - STAGE 2A**  
**INFRASTRUCTURE MASTER SERVICES**  
DATE 08.05.25 SCALE AS SHOWN PROJ No IW317000 REV P3



DATE: 8/05/2025 1:56:33 PM LOGIN NAME: BOUNDY, TROY A  
LOCATION: C:\temp\pw\_work\apne\_transp\_001\00214947\IW317000-JAC-DD-02-SKT-C4-000030.dwg



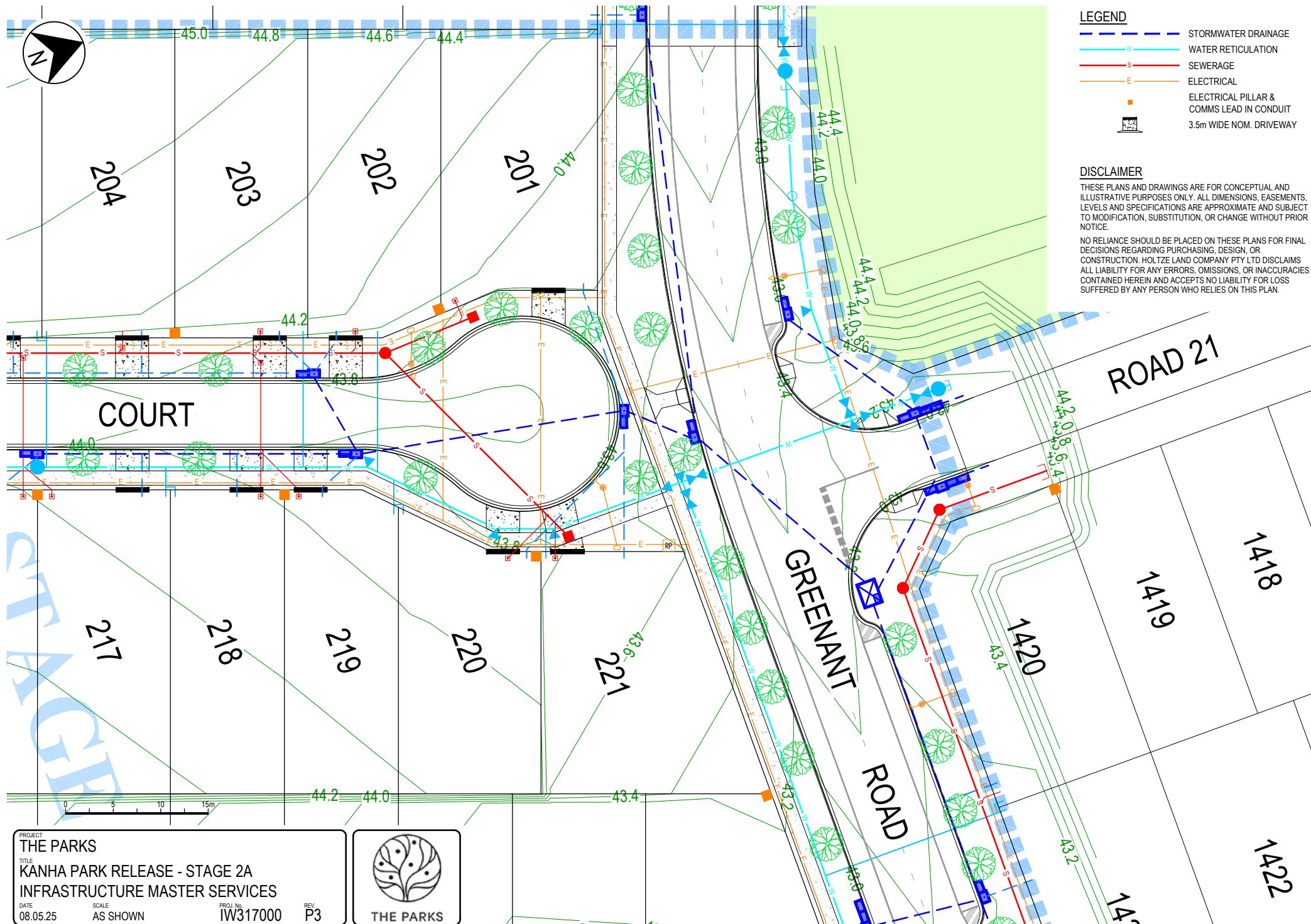
# LEGEND

- STORMWATER DRAINAGE
- WATER RETICULATION
- SEWERAGE
- ELECTRICAL
- ELECTRICAL PILLAR & COMMS LEAD IN CONDUIT
- 3.5m WIDE NOM. DRIVEWAY

## DISCLAIMER

THESE PLANS AND DRAWINGS ARE FOR CONCEPTUAL AND ILLUSTRATIVE PURPOSES ONLY. ALL DIMENSIONS, EASEMENTS, LEVELS AND SPECIFICATIONS ARE APPROXIMATE AND SUBJECT TO MODIFICATION, SUBSTITUTION, OR CHANGE WITHOUT PRIOR NOTICE.

NO RELIANCE SHOULD BE PLACED ON THESE PLANS FOR FINAL DECISIONS REGARDING PURCHASING, DESIGN, OR CONSTRUCTION. HOLTZE LAND COMPANY PTY LTD DISCLAIMS ALL LIABILITY FOR ANY ERRORS, OMISSIONS, OR INACCURACIES CONTAINED HEREIN AND ACCEPTS NO LIABILITY FOR LOSS SUFFERED BY ANY PERSON WHO RELIES ON THIS PLAN.



PROJECT  
THE PARKS  
TITLE  
KANHA PARK RELEASE - STAGE 2A  
INFRASTRUCTURE MASTER SERVICES

DATE 08.05.25 SCALE AS SHOWN PROJ No IW317000 REV P3



THE PARKS





LINCO ROAD

- LEGEND**
- STORMWATER DRAINAGE
  - WATER RETICULATION
  - SEWERAGE
  - ELECTRICAL
  - ELECTRICAL PILLAR & COMMS LEAD IN CONDUIT
  - 3.5m WIDE NOM. DRIVEWAY

**DISCLAIMER**

THESE PLANS AND DRAWINGS ARE FOR CONCEPTUAL AND ILLUSTRATIVE PURPOSES ONLY. ALL DIMENSIONS, EASEMENTS, LEVELS AND SPECIFICATIONS ARE APPROXIMATE AND SUBJECT TO MODIFICATION, SUBSTITUTION, OR CHANGE WITHOUT PRIOR NOTICE.

NO RELIANCE SHOULD BE PLACED ON THESE PLANS FOR FINAL DECISIONS REGARDING PURCHASING, DESIGN, OR CONSTRUCTION. HOLTZE LAND COMPANY PTY LTD DISCLAIMS ALL LIABILITY FOR ANY ERRORS, OMISSIONS, OR INACCURACIES CONTAINED HEREIN AND ACCEPTS NO LIABILITY FOR LOSS SUFFERED BY ANY PERSON WHO RELIES ON THIS PLAN.

CAPPARIS

CRESC



PROJECT  
**THE PARKS**

TITLE  
**KANHA PARK RELEASE - STAGE 2A  
INFRASTRUCTURE MASTER SERVICES**

DATE 08.05.25 SCALE AS SHOWN PROJ No IW317000 REV P3



DATE: 8/05/2025 1:56:39 PM LOGIN NAME: BOUNDY, TROY A  
LOCATION: C:\temp\pw\_work\apne\_transp\_001\00214947\IW317000-JAC-DD-02-SKT-CI-000030.dwg



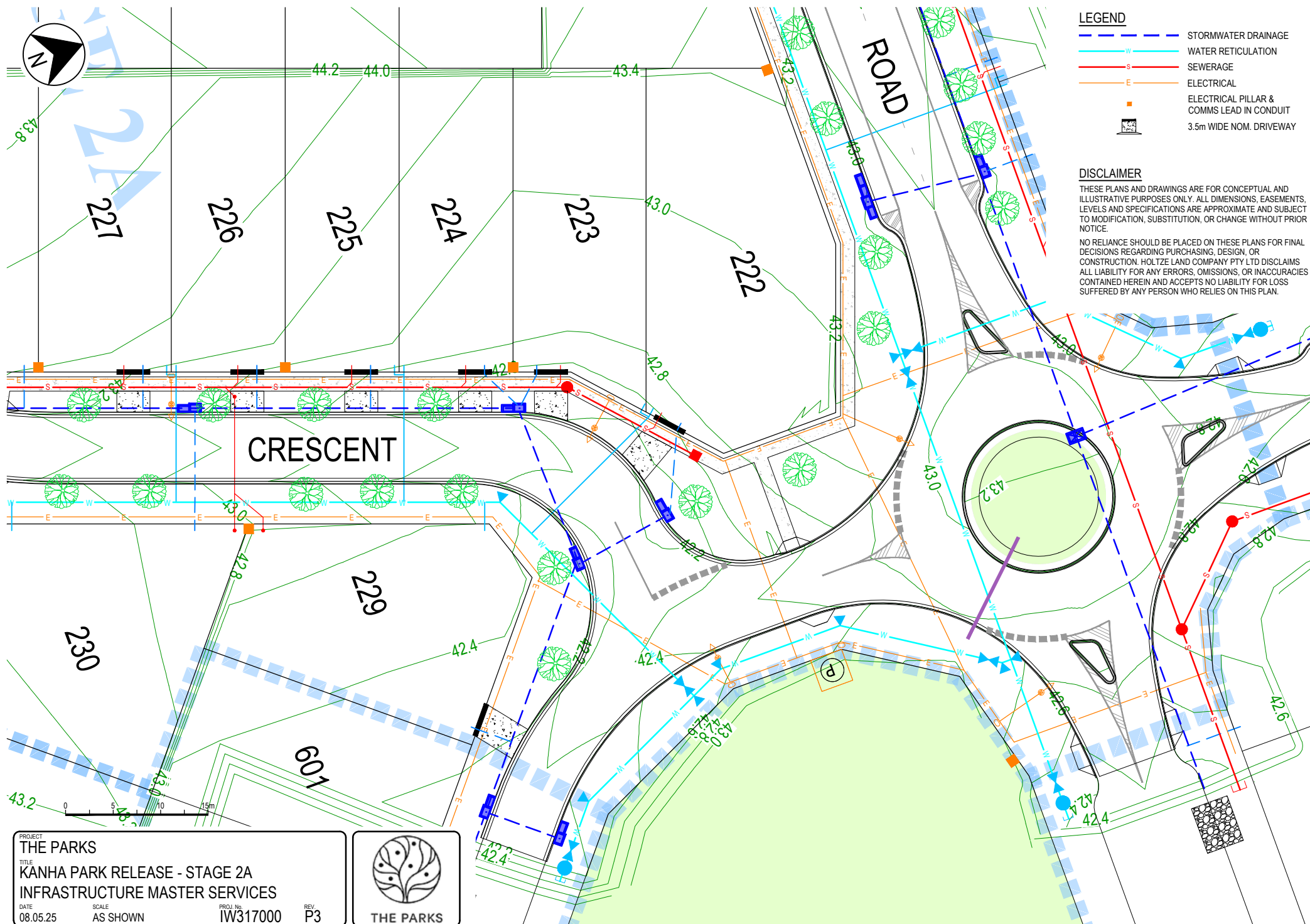
# LEGEND

- STORMWATER DRAINAGE
- WATER RETICULATION
- SEWERAGE
- ELECTRICAL
- ELECTRICAL PILLAR & COMMS LEAD IN CONDUIT
- 3.5m WIDE NOM. DRIVEWAY

# DISCLAIMER

THESE PLANS AND DRAWINGS ARE FOR CONCEPTUAL AND ILLUSTRATIVE PURPOSES ONLY. ALL DIMENSIONS, EASEMENTS, LEVELS AND SPECIFICATIONS ARE APPROXIMATE AND SUBJECT TO MODIFICATION, SUBSTITUTION, OR CHANGE WITHOUT PRIOR NOTICE.

NO RELIANCE SHOULD BE PLACED ON THESE PLANS FOR FINAL DECISIONS REGARDING PURCHASING, DESIGN, OR CONSTRUCTION. HOLTZE LAND COMPANY PTY LTD DISCLAIMS ALL LIABILITY FOR ANY ERRORS, OMISSIONS, OR INACCURACIES CONTAINED HEREIN AND ACCEPTS NO LIABILITY FOR LOSS SUFFERED BY ANY PERSON WHO RELIES ON THIS PLAN.



PROJECT  
THE PARKS  
TITLE  
KANHA PARK RELEASE - STAGE 2A  
INFRASTRUCTURE MASTER SERVICES

DATE 08.05.25 SCALE AS SHOWN PROJ No IW317000 REV P3



THE PARKS