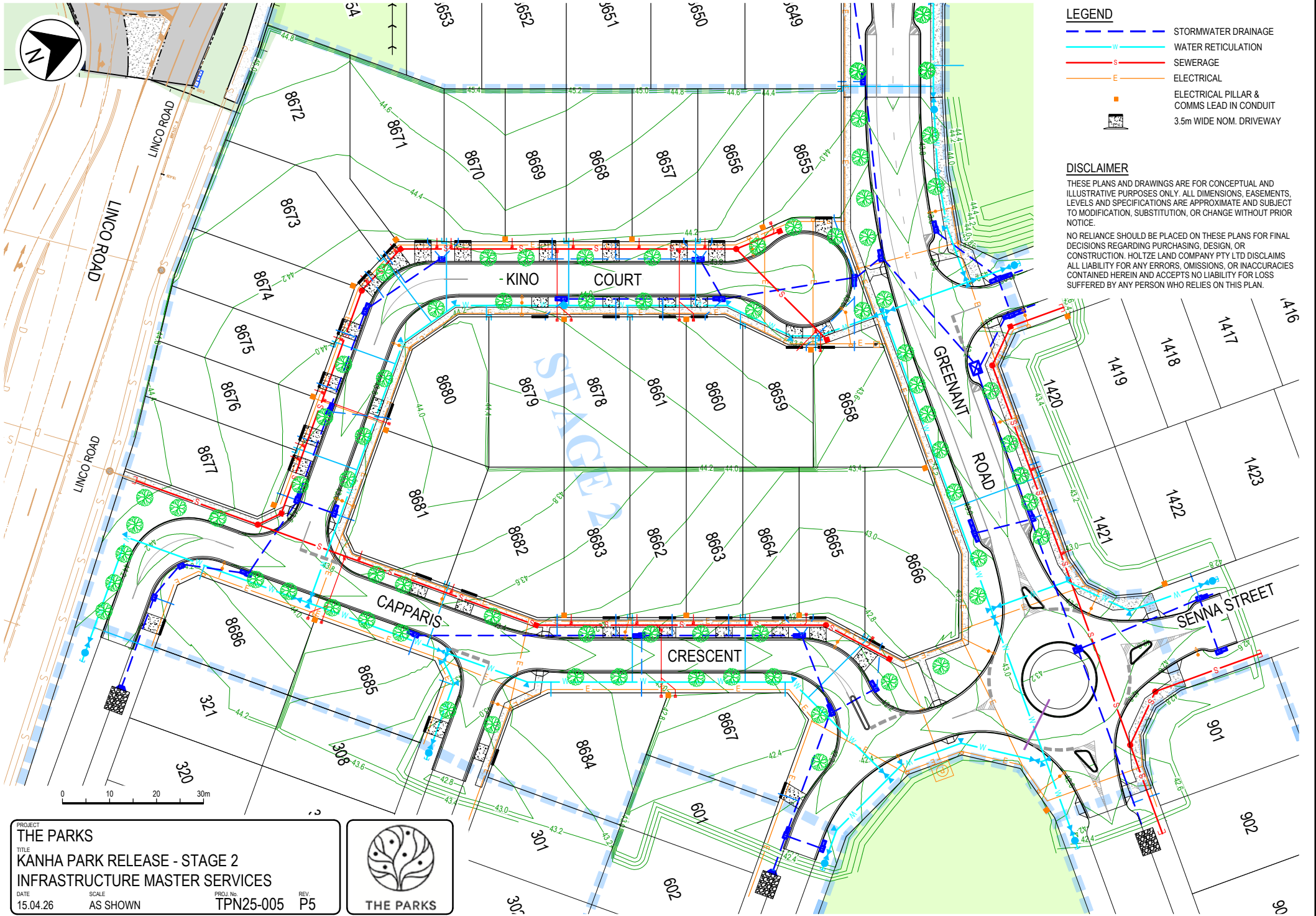


DATE: 15/04/2026 10:47:33 AM  
 LOGIN NAME: TROYB  
 LOCATION: c:\Users\troyb\OneDrive - TPN\Engineering - Projects\TPN25-005 - Projects\TPN25-005 The Parks\30 Delivery\02 Drawings\02 Stage 2\DWG317000-JAC-DD-02-SKT-CI-000030.dwg



**LEGEND**

- STORMWATER DRAINAGE
- WATER RETICULATION
- SEWERAGE
- ELECTRICAL
- ELECTRICAL PILLAR & COMMS LEAD IN CONDUIT
- 3.5m WIDE NOM. DRIVEWAY

**DISCLAIMER**

THESE PLANS AND DRAWINGS ARE FOR CONCEPTUAL AND ILLUSTRATIVE PURPOSES ONLY. ALL DIMENSIONS, EASEMENTS, LEVELS AND SPECIFICATIONS ARE APPROXIMATE AND SUBJECT TO MODIFICATION, SUBSTITUTION, OR CHANGE WITHOUT PRIOR NOTICE.  
 NO RELIANCE SHOULD BE PLACED ON THESE PLANS FOR FINAL DECISIONS REGARDING PURCHASING, DESIGN, OR CONSTRUCTION. HOLTZE LAND COMPANY PTY LTD DISCLAIMS ALL LIABILITY FOR ANY ERRORS, OMISSIONS, OR INACCURACIES CONTAINED HEREIN AND ACCEPTS NO LIABILITY FOR LOSS SUFFERED BY ANY PERSON WHO RELIES ON THIS PLAN.



PROJECT			
THE PARKS			
TITLE			
KANHA PARK RELEASE - STAGE 2			
INFRASTRUCTURE MASTER SERVICES			
DATE	SCALE	PROJ. No.	REV.
15.04.26	AS SHOWN	TPN25-005	P5



THE PARKS



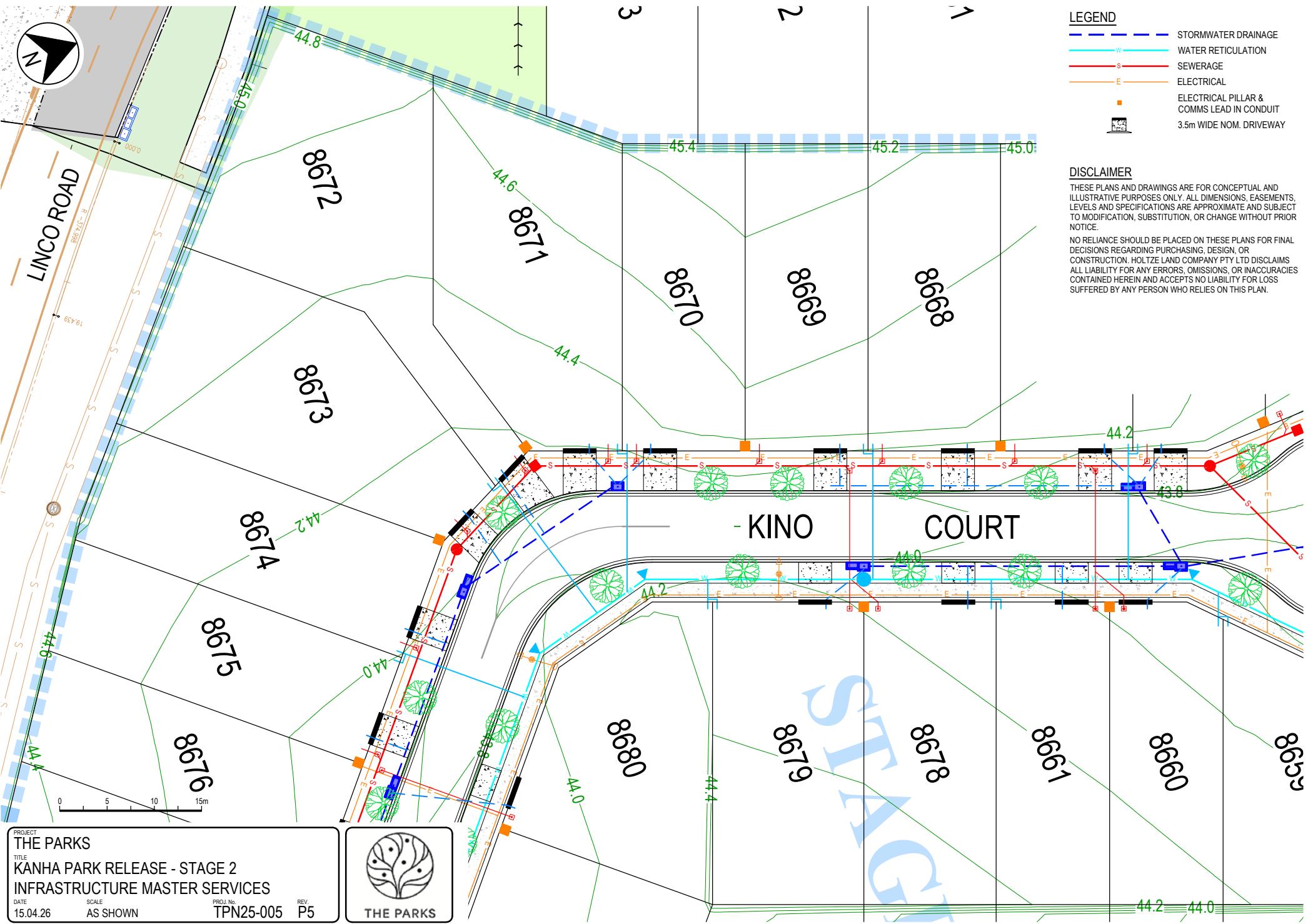
**LEGEND**

- STORMWATER DRAINAGE
- WATER RETICULATION
- SEWERAGE
- ELECTRICAL
-  ELECTRICAL PILLAR & COMMS LEAD IN CONDUIT
-  3.5m WIDE NOM. DRIVEWAY

**DISCLAIMER**

THESE PLANS AND DRAWINGS ARE FOR CONCEPTUAL AND ILLUSTRATIVE PURPOSES ONLY. ALL DIMENSIONS, EASEMENTS, LEVELS AND SPECIFICATIONS ARE APPROXIMATE AND SUBJECT TO MODIFICATION, SUBSTITUTION, OR CHANGE WITHOUT PRIOR NOTICE.

NO RELIANCE SHOULD BE PLACED ON THESE PLANS FOR FINAL DECISIONS REGARDING PURCHASING, DESIGN, OR CONSTRUCTION. HOLTZE LAND COMPANY PTY LTD DISCLAIMS ALL LIABILITY FOR ANY ERRORS, OMISSIONS, OR INACCURACIES CONTAINED HEREIN AND ACCEPTS NO LIABILITY FOR LOSS SUFFERED BY ANY PERSON WHO RELIES ON THIS PLAN.



DATE: 15/04/2026 10:47:34 AM  
 LOGIN NAME: TROYB  
 LOCATION: c:\Userstroyb\OneDrive - TPN\ENGIN\TPN - Projects\TPN25-005 The Parks\30 Delivery\02 Drawings\02 Stage 2\W317000-JAC-DD-02-SKT-CI-000030.dwg

<b>PROJECT</b>		<b>THE PARKS</b>	
<b>TITLE</b>		<b>KANHA PARK RELEASE - STAGE 2</b>	
<b>INFRASTRUCTURE MASTER SERVICES</b>			
<b>DATE</b>	<b>SCALE</b>	<b>PROJ No.</b>	<b>REV.</b>
15.04.26	AS SHOWN	TPN25-005	P5





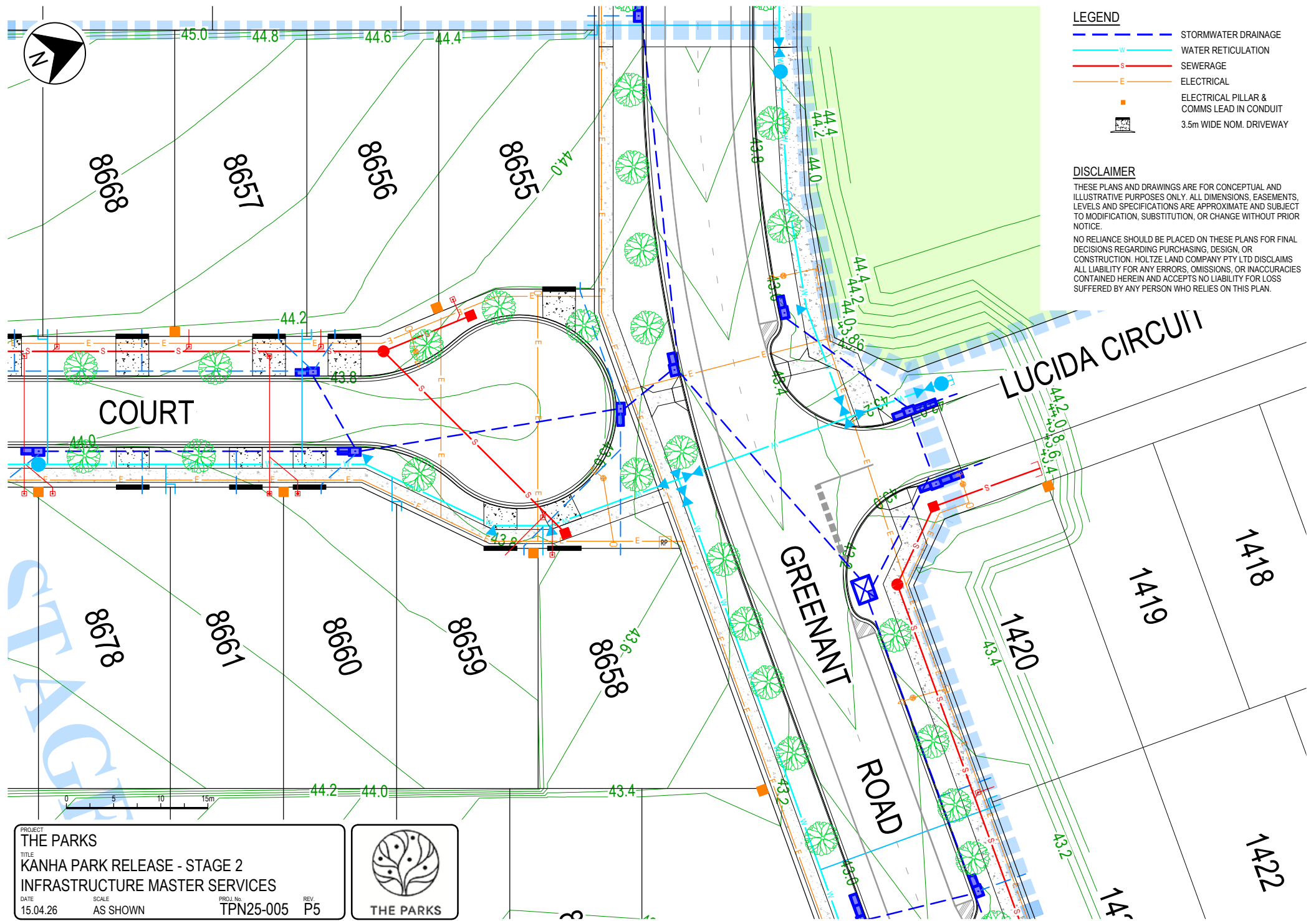
### LEGEND

- STORMWATER DRAINAGE
- WATER RETICULATION
- SEWERAGE
- ELECTRICAL
- ELECTRICAL PILLAR & COMMS LEAD IN CONDUIT
- 3.5m WIDE NOM. DRIVEWAY

### DISCLAIMER

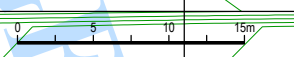
THESE PLANS AND DRAWINGS ARE FOR CONCEPTUAL AND ILLUSTRATIVE PURPOSES ONLY. ALL DIMENSIONS, EASEMENTS, LEVELS AND SPECIFICATIONS ARE APPROXIMATE AND SUBJECT TO MODIFICATION, SUBSTITUTION, OR CHANGE WITHOUT PRIOR NOTICE.

NO RELIANCE SHOULD BE PLACED ON THESE PLANS FOR FINAL DECISIONS REGARDING PURCHASING, DESIGN, OR CONSTRUCTION. HOLTZE LAND COMPANY PTY LTD DISCLAIMS ALL LIABILITY FOR ANY ERRORS, OMISSIONS, OR INACCURACIES CONTAINED HEREIN AND ACCEPTS NO LIABILITY FOR LOSS SUFFERED BY ANY PERSON WHO RELIES ON THIS PLAN.



LOGIN NAME: TROYB  
 DATE: 15/04/2026 10:47:35 AM  
 LOCATION: c:\Users\troyb\OneDrive - TPN\ENGIN\TPN - Projects\TPN25-005 The Parks\30 Delivery\02 Drawings\02 Stage 2\W317000-JAC-DD-02-SKT-CI-000030.dwg

PROJECT			
<b>THE PARKS</b>			
TITLE			
<b>KANHA PARK RELEASE - STAGE 2</b>			
<b>INFRASTRUCTURE MASTER SERVICES</b>			
DATE	SCALE	PROJ. No.	REV.
15.04.26	AS SHOWN	TPN25-005	P5

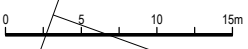


DATE: 15/04/2026 10:47:36 AM  
LOCATION: c:\Users\royb\OneDrive - TPN\Engineering - Projects\TPN25-005 - Projects\TPN25-005 The Parks\30 Delivery\02 Drawings\02 Stage 2\W317000-JAC-DD-02-SKT-CI-0000030.dwg

LOGIN NAME: TROYB



LINCO ROAD



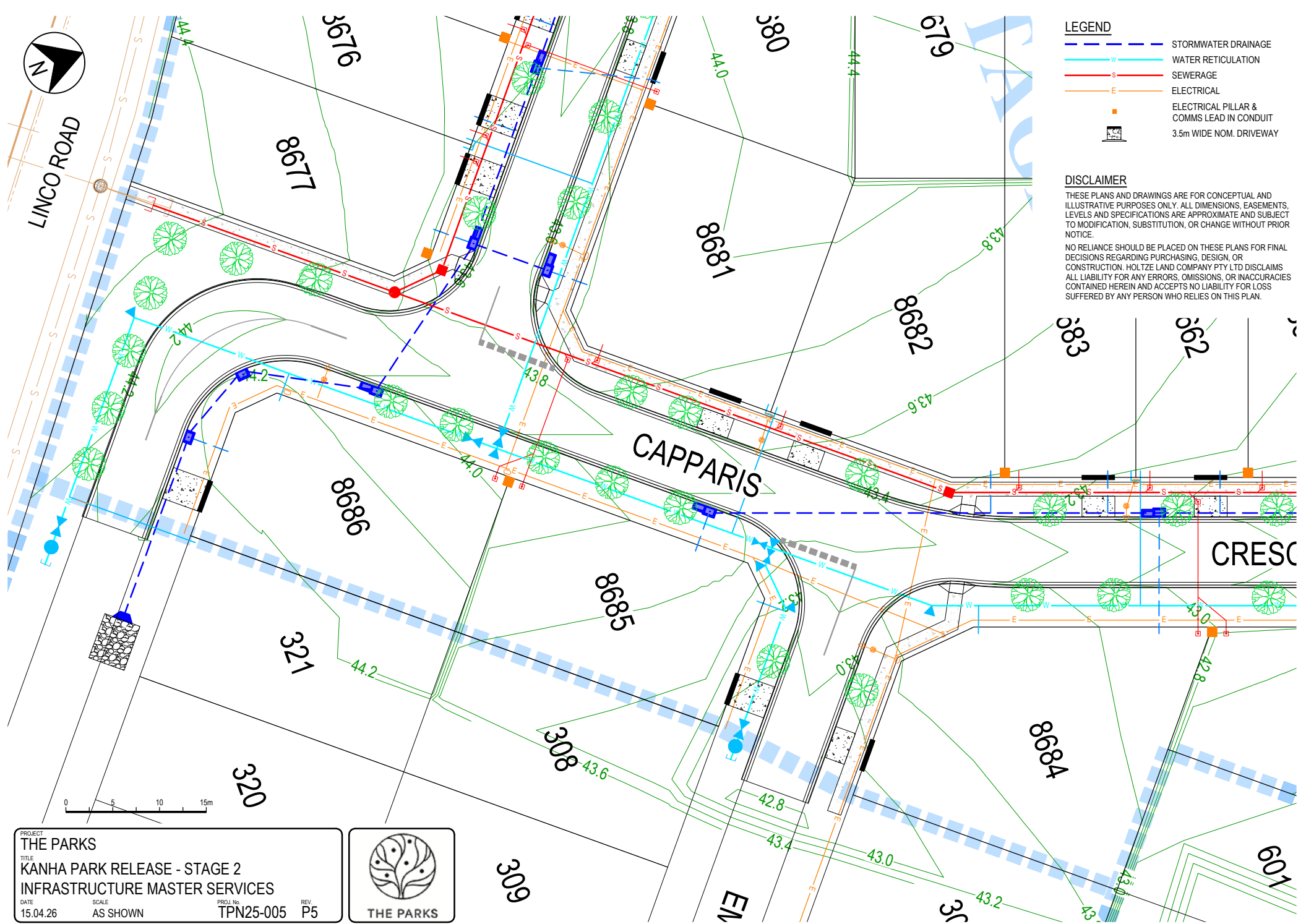
PROJECT  
**THE PARKS**  
TITLE  
**KANHA PARK RELEASE - STAGE 2**  
**INFRASTRUCTURE MASTER SERVICES**  
DATE 15.04.26 SCALE AS SHOWN PROJ. No. TPN25-005 REV. P5



**LEGEND**



- S --- STORMWATER DRAINAGE
- W --- WATER RETICULATION
- S --- SEWERAGE
- E --- ELECTRICAL
- ELECTRICAL PILLAR & COMMS LEAD IN CONDUIT
- ▭ 3.5m WIDE NOM. DRIVEWAY

**DISCLAIMER**  
THESE PLANS AND DRAWINGS ARE FOR CONCEPTUAL AND ILLUSTRATIVE PURPOSES ONLY. ALL DIMENSIONS, EASEMENTS, LEVELS AND SPECIFICATIONS ARE APPROXIMATE AND SUBJECT TO MODIFICATION, SUBSTITUTION, OR CHANGE WITHOUT PRIOR NOTICE.  
NO RELIANCE SHOULD BE PLACED ON THESE PLANS FOR FINAL DECISIONS REGARDING PURCHASING, DESIGN, OR CONSTRUCTION. HOLTZE LAND COMPANY PTY LTD DISCLAIMS ALL LIABILITY FOR ANY ERRORS, OMISSIONS, OR INACCURACIES CONTAINED HEREIN AND ACCEPTS NO LIABILITY FOR LOSS SUFFERED BY ANY PERSON WHO RELIES ON THIS PLAN.





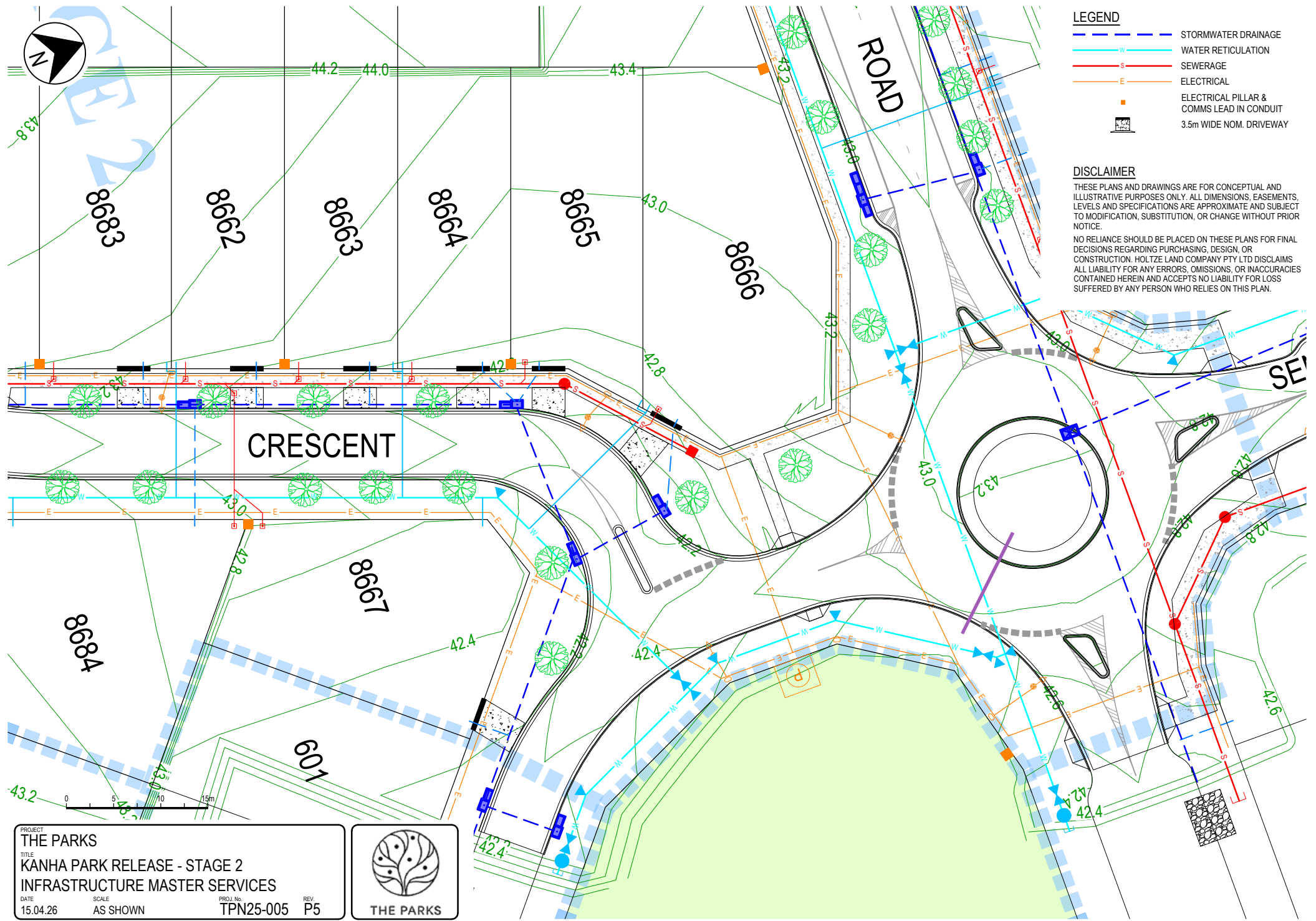
### LEGEND

- STORMWATER DRAINAGE
- WATER RETICULATION
- SEWERAGE
- ELECTRICAL
-  ELECTRICAL PILLAR & COMMS LEAD IN CONDUIT
-  3.5m WIDE NOM. DRIVEWAY

### DISCLAIMER

THESE PLANS AND DRAWINGS ARE FOR CONCEPTUAL AND ILLUSTRATIVE PURPOSES ONLY. ALL DIMENSIONS, EASEMENTS, LEVELS AND SPECIFICATIONS ARE APPROXIMATE AND SUBJECT TO MODIFICATION, SUBSTITUTION, OR CHANGE WITHOUT PRIOR NOTICE.

NO RELIANCE SHOULD BE PLACED ON THESE PLANS FOR FINAL DECISIONS REGARDING PURCHASING, DESIGN, OR CONSTRUCTION. HOLTZE LAND COMPANY PTY LTD DISCLAIMS ALL LIABILITY FOR ANY ERRORS, OMISSIONS, OR INACCURACIES CONTAINED HEREIN AND ACCEPTS NO LIABILITY FOR LOSS SUFFERED BY ANY PERSON WHO RELIES ON THIS PLAN.



<b>PROJECT</b>			
<b>THE PARKS</b>			
<b>TITLE</b>			
<b>KANHA PARK RELEASE - STAGE 2</b>			
<b>INFRASTRUCTURE MASTER SERVICES</b>			
<b>DATE</b>	<b>SCALE</b>	<b>PROJ. No.</b>	<b>REV.</b>
15.04.26	AS SHOWN	TPN25-005	P5



LOGIN NAME: TROYB  
 DATE: 15/04/2026 10:47:38 AM  
 LOCATION: C:\Userstroyb\OneDrive - TPN\ENGIN\ENG - Projects\TPN25-005 The Parks\30 Delivery\02 Drawings\02 Stage 2\W317000-JAC-DD-02-SKT-CI-000030.dwg