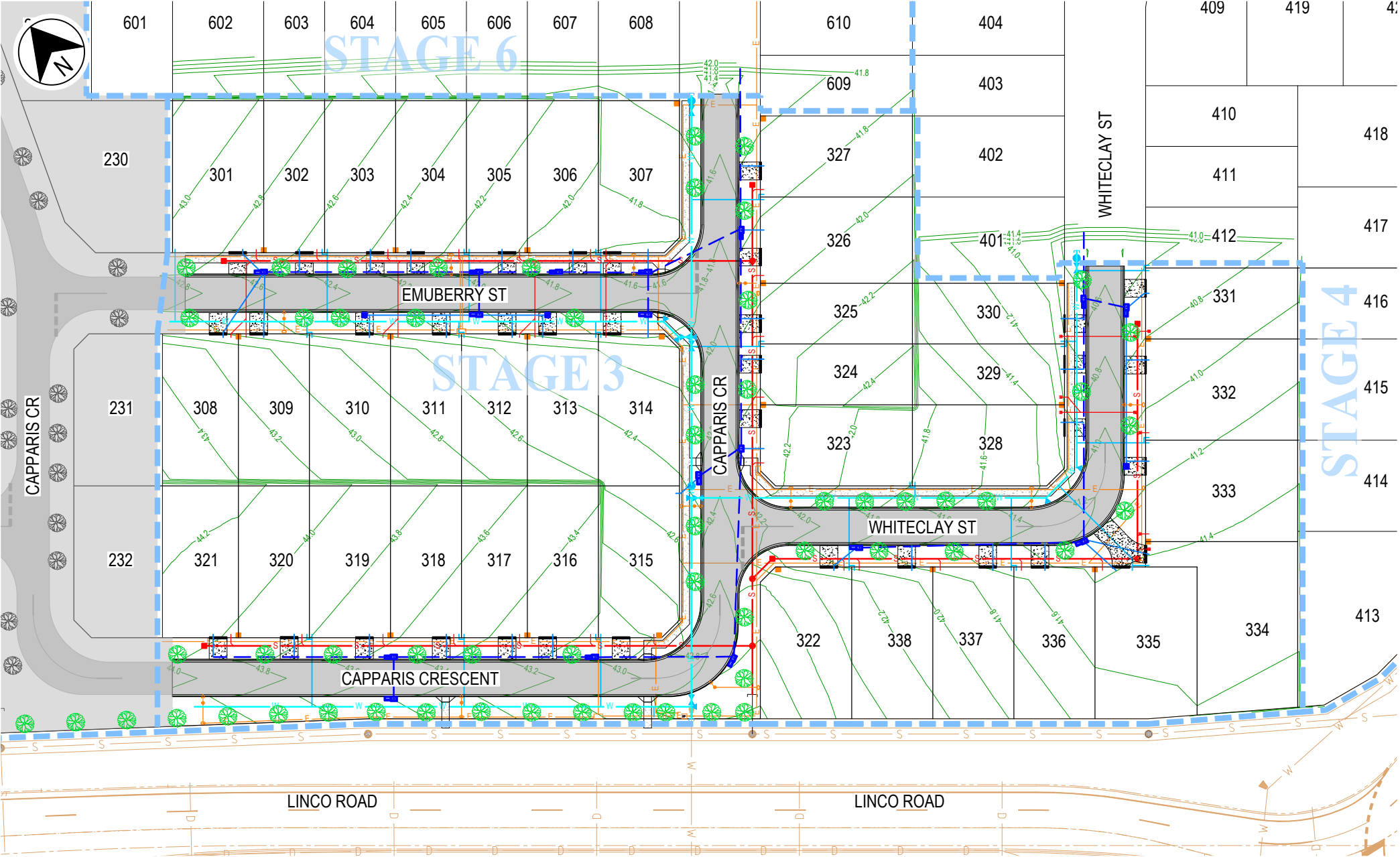


DATE: 15/04/2026 2:24:31 PM LOGIN NAME: TROYB
 LOCATION: c:\Users\troyb\OneDrive - TPN\ENGIN\TPN - Projects\TPN25-005 The Parks\30 Delivery\02 Drawings\03 Stage 3\W317000-JAC-DD-03-SKT-CI-000030.dwg



PROJECT
THE PARKS - STAGE 3
 TITLE
BARDIYA PARK RELEASE
 INFRASTRUCTURE MASTER SERVICES
 DATE 15.04.26 SCALE AS SHOWN PROJ No. TPN25-005 REV. P2



DISCLAIMER
 THESE PLANS AND DRAWINGS ARE FOR CONCEPTUAL AND ILLUSTRATIVE PURPOSES ONLY. ALL DIMENSIONS, EASEMENTS, LEVELS AND SPECIFICATIONS ARE APPROXIMATE AND SUBJECT TO MODIFICATION, SUBSTITUTION, OR CHANGE WITHOUT PRIOR NOTICE.
 NO RELIANCE SHOULD BE PLACED ON THESE PLANS FOR FINAL DECISIONS REGARDING PURCHASING, DESIGN OR CONSTRUCTION. HOLTZE LAND COMPANY PTY LTD DISCLAIMS ALL LIABILITY FOR ANY ERRORS, OMISSIONS, OR INACCURACIES CONTAINED HEREIN AND ACCEPTS NO LIABILITY FOR LOSS SUFFERED BY ANY PERSON WHO RELIES ON THIS PLAN.

LEGEND

- STORMWATER DRAINAGE
- WATER RETICULATION
- SEWERAGE
- ELECTRICAL
- ELECTRICAL PILLAR & COMMS LEAD IN CONDUIT
- 3.5m WIDE NOM. DRIVEWAY



DATE: 15/04/2026 2:24:32 PM LOGIN NAME: TROYB
LOCATION: c:\userstroyb\OneDrive - TPN\ENGIN\TPN - Projects\TPN25-005 The Parks\30 Drawings\03 Stage 3\W317000-JAC-DD-03-SKT-CI-000030.dwg



230

301

302

303

304

305

306

307

43.0

42.8

42.6

42.4

42.2

42.0

41.8

42.8

42.6

42.4

42.2

42.0

41.8

41.6

41.6

EMUBERRY ST

STAGE 3

CAPPARIS CR

231

308

309

310

311

312

313

314

43.4

43.2

43.0

42.8

42.6

42.4

PROJECT
THE PARKS - STAGE 3

TITLE
BARDIYA PARK RELEASE

INFRASTRUCTURE MASTER SERVICES

DATE: 15.04.26 SCALE: AS SHOWN PROJ. No: TPN25-005 REV. P2









DISCLAIMER

THESE PLANS AND DRAWINGS ARE FOR CONCEPTUAL AND ILLUSTRATIVE PURPOSES ONLY. ALL DIMENSIONS, EASEMENTS, LEVELS AND SPECIFICATIONS ARE APPROXIMATE AND SUBJECT TO MODIFICATION, SUBSTITUTION, OR CHANGE WITHOUT PRIOR NOTICE.

NO RELIANCE SHOULD BE PLACED ON THESE PLANS FOR FINAL DECISIONS REGARDING PURCHASING, DESIGN OR CONSTRUCTION. HOLTZE LAND COMPANY PTY LTD DISCLAIMS ALL LIABILITY FOR ANY ERRORS, OMISSIONS, OR INACCURACIES CONTAINED HEREIN AND ACCEPTS NO LIABILITY FOR LOSS SUFFERED BY ANY PERSON WHO RELIES ON THIS PLAN.

LEGEND

-  STORMWATER DRAINAGE
-  WATER RETICULATION
-  SEWERAGE
-  ELECTRICAL
-  ELECTRICAL PILLAR & COMMS LEAD IN CONDUIT
-  3.5m WIDE NOM. DRIVEWAY





CAPPARI

231

308

309

310

311

312

313

314

232

321

320

319

318

317

316

315

CAPPARI CRESCENT

LINCO ROAD

PROJECT
THE PARKS - STAGE 3

TITLE
BARDIYA PARK RELEASE

INFRASTRUCTURE MASTER SERVICES

DATE 15.04.26 SCALE AS SHOWN PROJ. No. TPN25-005 REV. P2









DISCLAIMER

THESE PLANS AND DRAWINGS ARE FOR CONCEPTUAL AND ILLUSTRATIVE PURPOSES ONLY. ALL DIMENSIONS, EASEMENTS, LEVELS AND SPECIFICATIONS ARE APPROXIMATE AND SUBJECT TO MODIFICATION, SUBSTITUTION, OR CHANGE WITHOUT PRIOR NOTICE.

NO RELIANCE SHOULD BE PLACED ON THESE PLANS FOR FINAL DECISIONS REGARDING PURCHASING, DESIGN OR CONSTRUCTION. HOLITZE LAND COMPANY PTY LTD DISCLAIMS ALL LIABILITY FOR ANY ERRORS, OMISSIONS, OR INACCURACIES CONTAINED HEREIN AND ACCEPTS NO LIABILITY FOR LOSS SUFFERED BY ANY PERSON WHO RELIES ON THIS PLAN.

LEGEND

-  STORMWATER DRAINAGE
-  WATER RETICULATION
-  SEWERAGE
-  ELECTRICAL
-  ELECTRICAL PILLAR & COMMS LEAD IN CONDUIT
-  3.5m WIDE NOM. DRIVEWAY

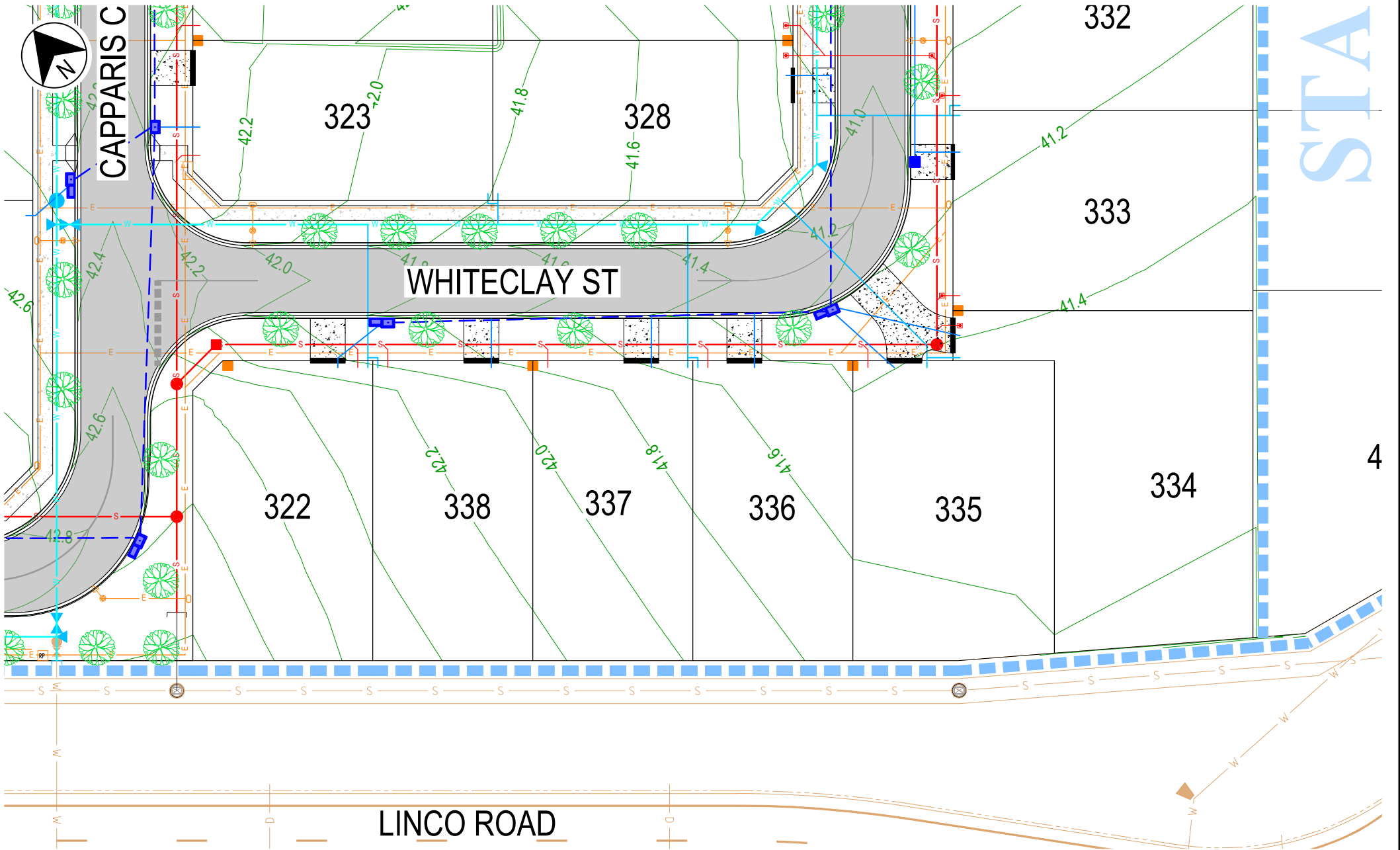


DATE: 15/04/2026 2:24:34 PM LOGIN NAME: TROYB LOCATION: c:\Users\royb\OneDrive - TPN\ENGIN\TPN25-005 The Parks\30 Drawings\03 Stage 3\W317000-JAC-DD-03-SKT-CI-000030.dwg

DATE: 15/04/2026 2:24:35 PM LOGIN NAME: TROYB
LOCATION: c:\Users\troyb\OneDrive - TPN\ENGIN\TPN - Projects\TPN25-005 The Parks\30 Delivery\02 Drawings\03 Stage 3\W317000-JAC-DD-03-SKT-CI-000030.dwg



CAPPARIS C



LINCO ROAD

PROJECT
THE PARKS - STAGE 3
TITLE
BARDIYA PARK RELEASE
INFRASTRUCTURE MASTER SERVICES

DATE 15.04.26 SCALE AS SHOWN PROJ No. TPN25-005 REV. P2









DISCLAIMER

THESE PLANS AND DRAWINGS ARE FOR CONCEPTUAL AND ILLUSTRATIVE PURPOSES ONLY. ALL DIMENSIONS, EASEMENTS, LEVELS AND SPECIFICATIONS ARE APPROXIMATE AND SUBJECT TO MODIFICATION, SUBSTITUTION, OR CHANGE WITHOUT PRIOR NOTICE.

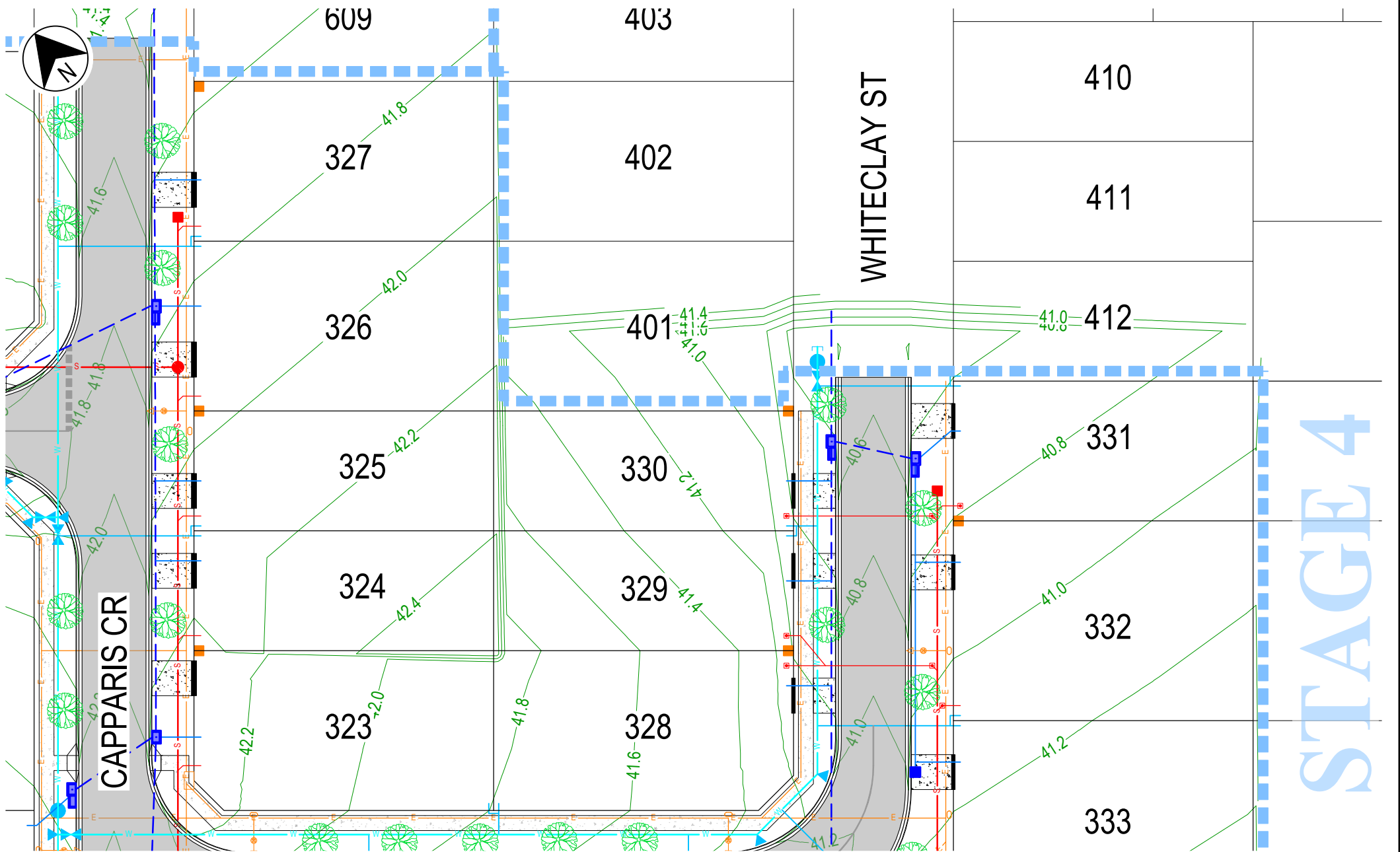
NO RELIANCE SHOULD BE PLACED ON THESE PLANS FOR FINAL DECISIONS REGARDING PURCHASING, DESIGN OR CONSTRUCTION. HOLTZE LAND COMPANY PTY LTD DISCLAIMS ALL LIABILITY FOR ANY ERRORS, OMISSIONS, OR INACCURACIES CONTAINED HEREIN AND ACCEPTS NO LIABILITY FOR LOSS SUFFERED BY ANY PERSON WHO RELIES ON THIS PLAN.

LEGEND

-  STORMWATER DRAINAGE
-  WATER RETICULATION
-  SEWERAGE
-  ELECTRICAL
-  ELECTRICAL PILLAR & COMMS LEAD IN CONDUIT
-  3.5m WIDE NOM. DRIVEWAY



DATE: 15/04/2026 2:24:37 PM LOGIN NAME: TROYB
 LOCATION: c:\Userstroy\OneDrive - TPN\ENGIN\TPN - Projects\TPN25-005 The Parks\30 Delivery\02 Drawings\03 Stage 3\W317000-JAC-DD-03-SKT-CI-000030.dwg



STAGE 4

PROJECT
THE PARKS - STAGE 3
 TITLE
BARDIYA PARK RELEASE
INFRASTRUCTURE MASTER SERVICES
 DATE 15.04.26 SCALE AS SHOWN PROJ. No. TPN25-005 REV. P2



DISCLAIMER

THESE PLANS AND DRAWINGS ARE FOR CONCEPTUAL AND ILLUSTRATIVE PURPOSES ONLY. ALL DIMENSIONS, EASEMENTS, LEVELS AND SPECIFICATIONS ARE APPROXIMATE AND SUBJECT TO MODIFICATION, SUBSTITUTION, OR CHANGE WITHOUT PRIOR NOTICE.
 NO RELIANCE SHOULD BE PLACED ON THESE PLANS FOR FINAL DECISIONS REGARDING PURCHASING, DESIGN OR CONSTRUCTION. HOLTZE LAND COMPANY PTY LTD DISCLAIMS ALL LIABILITY FOR ANY ERRORS, OMISSIONS, OR INACCURACIES CONTAINED HEREIN AND ACCEPTS NO LIABILITY FOR LOSS SUFFERED BY ANY PERSON WHO RELIES ON THIS PLAN.

LEGEND

- STORMWATER DRAINAGE
- WATER RETICULATION
- SEWERAGE
- ELECTRICAL
- ELECTRICAL PILLAR & COMMS LEAD IN CONDUIT
- 3.5m WIDE NOM. DRIVEWAY

