



9005  
DOG PARK

FUTURE  
EXTENSION

TAYLOR ROAD

DAMBILINGWA ROAD

WINGAN LOOP

STAGE 4

STAGE 5

WINGAN LOOP

WINGAN LOOP

421

422

501

502

503

504

505

506

507

508

542

543

544

545

546

547

548

549

550

551

423

516

515

514

513

512

511

510

509

424

517

518

425

426

519

520

427

428

521

522

523

524

525

526

527

528

529

530

531

532

541

540

539

538

537

536

535

534

533

PROJECT  
**THE PARKS - STAGE 5**

TITLE  
**FIORDLAND/TONGARIRO PARK RELEASE  
INFRASTRUCTURE MASTER SERVICES**

DATE: 15.04.26 SCALE: AS SHOWN PROJ. No: TPN25-005 REV. P7



**DISCLAIMER**  
THESE PLANS AND DRAWINGS ARE FOR CONCEPTUAL AND ILLUSTRATIVE PURPOSES ONLY. ALL DIMENSIONS, EASEMENTS, LEVELS AND SPECIFICATIONS ARE APPROXIMATE AND SUBJECT TO MODIFICATION, SUBSTITUTION, OR CHANGE WITHOUT PRIOR NOTICE.  
NO RELIANCE SHOULD BE PLACED ON THESE PLANS FOR FINAL DECISIONS REGARDING PURCHASING, DESIGN, OR CONSTRUCTION. HOLTZE LAND COMPANY PTY LTD DISCLAIMS ALL LIABILITY FOR ANY ERRORS, OMISSIONS, OR INACCURACIES CONTAINED HEREIN AND ACCEPTS NO LIABILITY FOR LOSS SUFFERED BY ANY PERSON WHO RELIES ON THIS PLAN.

**LEGEND**

- STORMWATER DRAINAGE
- WATER RETICULATION
- SEWERAGE
- ELECTRICAL

ELECTRICAL PILLAR & COMMS LEAD IN CONDUIT  
3.5m WIDE NOM. DRIVEWAY



DATE: 15/04/2026 2:31:23 PM LOGIN NAME: TROYB LOCATION: c:\Users\royb\OneDrive - TPN\ENGIN\TPN - Projects\TPN25-005 - The Parks\30 Delivery\02 Drawings\05 Stage 5\TPN25005-DD-05-CI-SKT-0031 - Infrastructure Plan.dwg



FUTURE  
EXTENSION

TAYLOR ROAD

542<sub>s</sub>

543

544

545

546

506

507

508

WINGAN LOOP

37.2

37.2

38.2

38.0

37.8

9.13

PROJECT  
**THE PARKS - STAGE 5**

TITLE  
**FIORDLAND/TONGARIRO PARK RELEASE  
INFRASTRUCTURE MASTER SERVICES**

DATE: 15.04.26      SCALE: AS SHOWN      PROJ. No: TPN25-005      REV: P7



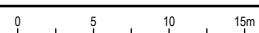
**DISCLAIMER**  
THESE PLANS AND DRAWINGS ARE FOR CONCEPTUAL AND ILLUSTRATIVE PURPOSES ONLY. ALL DIMENSIONS, EASEMENTS, LEVELS AND SPECIFICATIONS ARE APPROXIMATE AND SUBJECT TO MODIFICATION, SUBSTITUTION, OR CHANGE WITHOUT PRIOR NOTICE.

NO RELIANCE SHOULD BE PLACED ON THESE PLANS FOR FINAL DECISIONS REGARDING PURCHASING, DESIGN, OR CONSTRUCTION. HOLTZE LAND COMPANY PTY LTD DISCLAIMS ALL LIABILITY FOR ANY ERRORS, OMISSIONS, OR INACCURACIES CONTAINED HEREIN AND ACCEPTS NO LIABILITY FOR LOSS SUFFERED BY ANY PERSON WHO RELIES ON THIS PLAN.

**LEGEND**

- STORMWATER DRAINAGE
- WATER RETICULATION
- SEWERAGE
- ELECTRICAL

ELECTRICAL PILLAR & COMMS LEAD IN CONDUIT  
 3.5m WIDE NOM. DRIVEWAY



DATE: 15/04/2026 2:31:25 PM LOGIN NAME: TROYB  
LOCATION: c:\Users\royb\OneDrive - TPN\ENGIN\ - TPN\ENGIN\ - Projects\TPN25-005 - Projects\TPN25-005 Stage 5\TPN25005-DD-05-CI-SKT-0031\_Infrastructure Plan.dwg

# DAMBILINGWA ROAD



501

502

503

504

505

506

507

508

516

515

514

513

512

511

510

509

517

39.0

38.8

38.6

38.4

38.2

38.0

37.8

37.2

38.8

38.6

38.4

38.2

38.0

37.8

37.6

0.6%

38.4

38.2

37.6

38.6

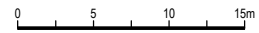
PROJECT  
**THE PARKS - STAGE 5**  
 TITLE  
**FIORDLAND/TONGARIRO PARK RELEASE**  
**INFRASTRUCTURE MASTER SERVICES**  
 DATE 15.04.26 SCALE AS SHOWN PROJ. No. TPN25-005 REV. P7



**DISCLAIMER**  
 THESE PLANS AND DRAWINGS ARE FOR CONCEPTUAL AND ILLUSTRATIVE PURPOSES ONLY. ALL DIMENSIONS, EASEMENTS, LEVELS AND SPECIFICATIONS ARE APPROXIMATE AND SUBJECT TO MODIFICATION, SUBSTITUTION, OR CHANGE WITHOUT PRIOR NOTICE.  
 NO RELIANCE SHOULD BE PLACED ON THESE PLANS FOR FINAL DECISIONS REGARDING PURCHASING, DESIGN, OR CONSTRUCTION. HOLTZE LAND COMPANY PTY LTD DISCLAIMS ALL LIABILITY FOR ANY ERRORS, OMISSIONS, OR INACCURACIES CONTAINED HEREIN AND ACCEPTS NO LIABILITY FOR LOSS SUFFERED BY ANY PERSON WHO RELIES ON THIS PLAN.

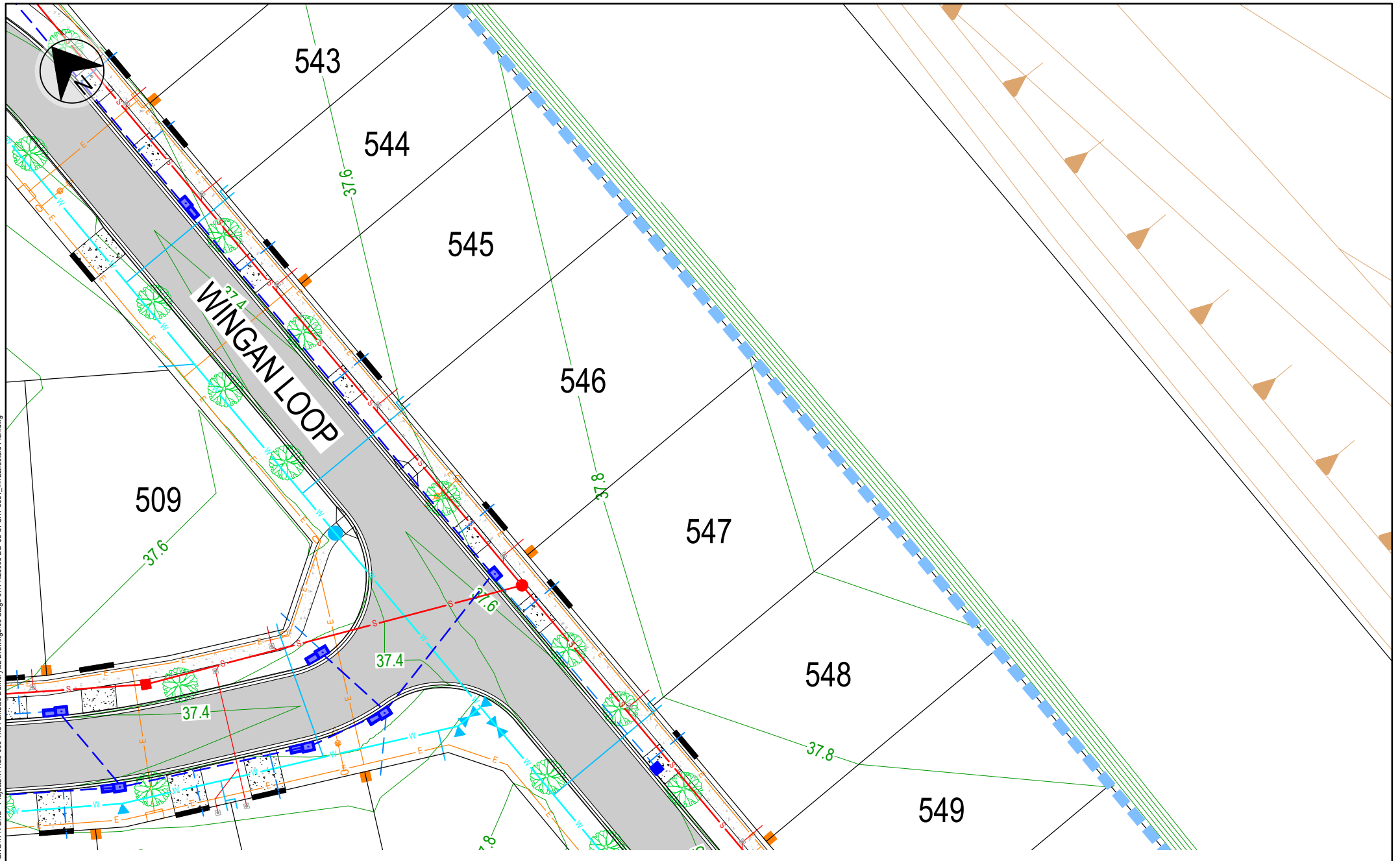
**LEGEND**

- STORMWATER DRAINAGE
- WATER RETICULATION
- SEWERAGE
- ELECTRICAL
- ELECTRICAL PILLAR & COMMS LEAD IN CONDUIT
- 3.5m WIDE NOM. DRIVEWAY



DATE: 15/04/2026 2:31:27 PM LOGIN NAME: TROYB LOCATION: c:\Users\royb\OneDrive - TPN\ENGIN\TPN - Projects\TPN25-005 - The Parks\30 Delivery\02 Drawings\05 Stage 5\TPN25005-DD-05-CI-SKT-0031\_Infrastructure Plan.dwg

DATE: 15/04/2026 2:31:30 PM LOGIN NAME: TROYB  
LOCATION: c:\Users\royb\OneDrive - TPN\ENGIN\TPN - Projects\TPN25-005 - The Parks\30 Delivery\02 Drawings\05 Stage 5\TPN25005-DD-05-CI-SKT-0031\_Infrastructure Plan.dwg



PROJECT  
**THE PARKS - STAGE 5**

TITLE  
**FIORDLAND/TONGARIRO PARK RELEASE  
INFRASTRUCTURE MASTER SERVICES**

DATE: 15.04.26 SCALE: AS SHOWN PROJ. No: TPN25-005 REV. P7



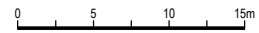
**DISCLAIMER**  
THESE PLANS AND DRAWINGS ARE FOR CONCEPTUAL AND ILLUSTRATIVE PURPOSES ONLY. ALL DIMENSIONS, EASEMENTS, LEVELS AND SPECIFICATIONS ARE APPROXIMATE AND SUBJECT TO MODIFICATION, SUBSTITUTION, OR CHANGE WITHOUT PRIOR NOTICE.  
NO RELIANCE SHOULD BE PLACED ON THESE PLANS FOR FINAL DECISIONS REGARDING PURCHASING, DESIGN, OR CONSTRUCTION. HOLTZE LAND COMPANY PTY LTD DISCLAIMS ALL LIABILITY FOR ANY ERRORS, OMISSIONS, OR INACCURACIES CONTAINED HEREIN AND ACCEPTS NO LIABILITY FOR LOSS SUFFERED BY ANY PERSON WHO RELIES ON THIS PLAN.

**LEGEND**

	STORMWATER DRAINAGE
	WATER RETICULATION
	SEWERAGE
	ELECTRICAL



ELECTRICAL PILLAR & COMMS LEAD IN CONDUIT  
3.5m WIDE NOM. DRIVEWAY



DATE: 15/04/2026 2:31:31 PM LOGIN NAME: TROYB  
 LOCATION: c:\Users\roy@oneDrive - TPN\ENGIN\TPN - Projects\TPN25-005 The Parks\30 Delivery\02 Drawings\05 Stage 5\TPN25005-05-05-CI-SKT-0031\_Infrastructure Plan.dwg

PROJECT  
**THE PARKS - STAGE 5**  
 TITLE  
**FIORDLAND/TONGARIRO PARK RELEASE**  
**INFRASTRUCTURE MASTER SERVICES**  
 DATE 15.04.26 SCALE AS SHOWN PROJ. No. TPN25-005 REV. P7

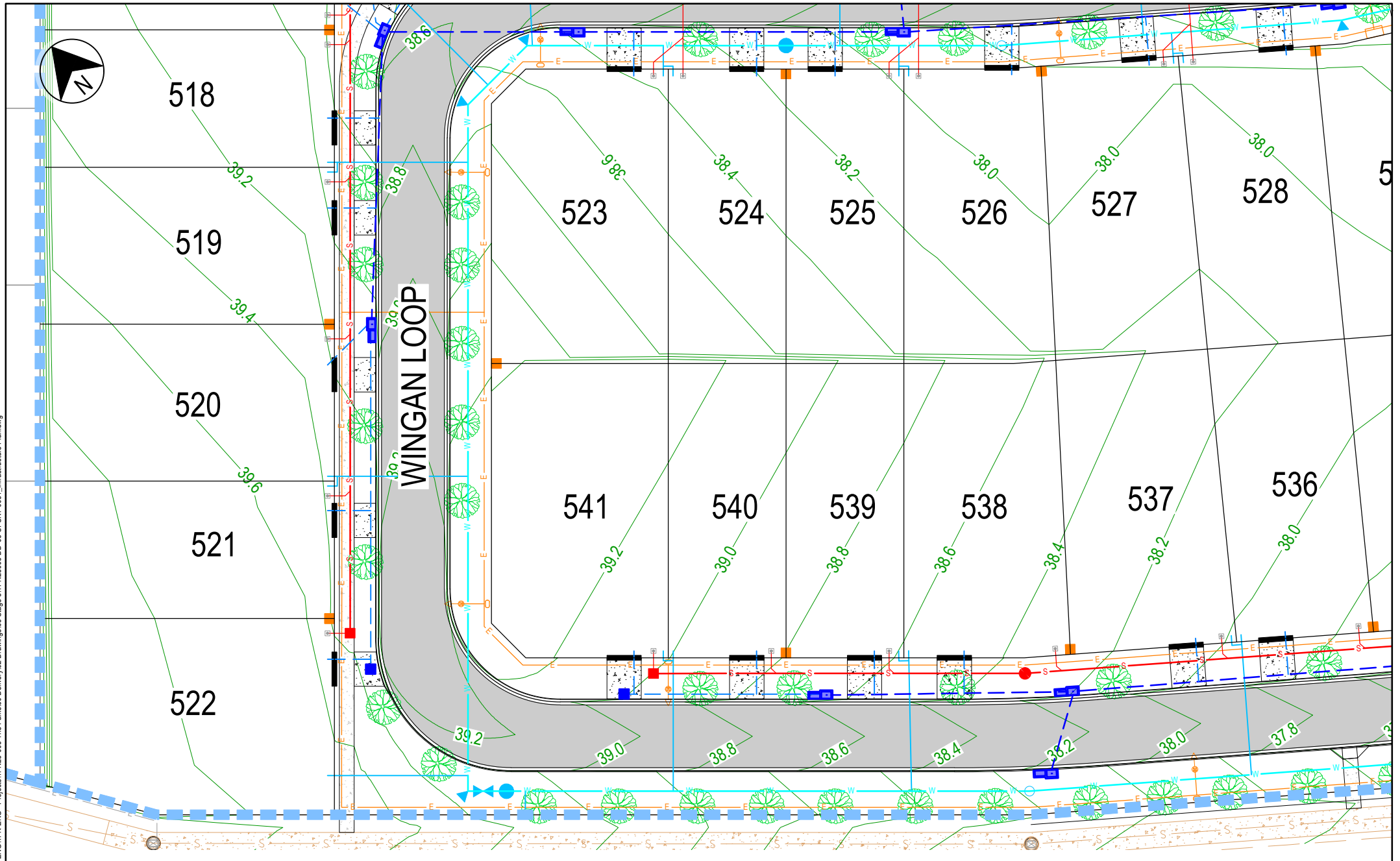


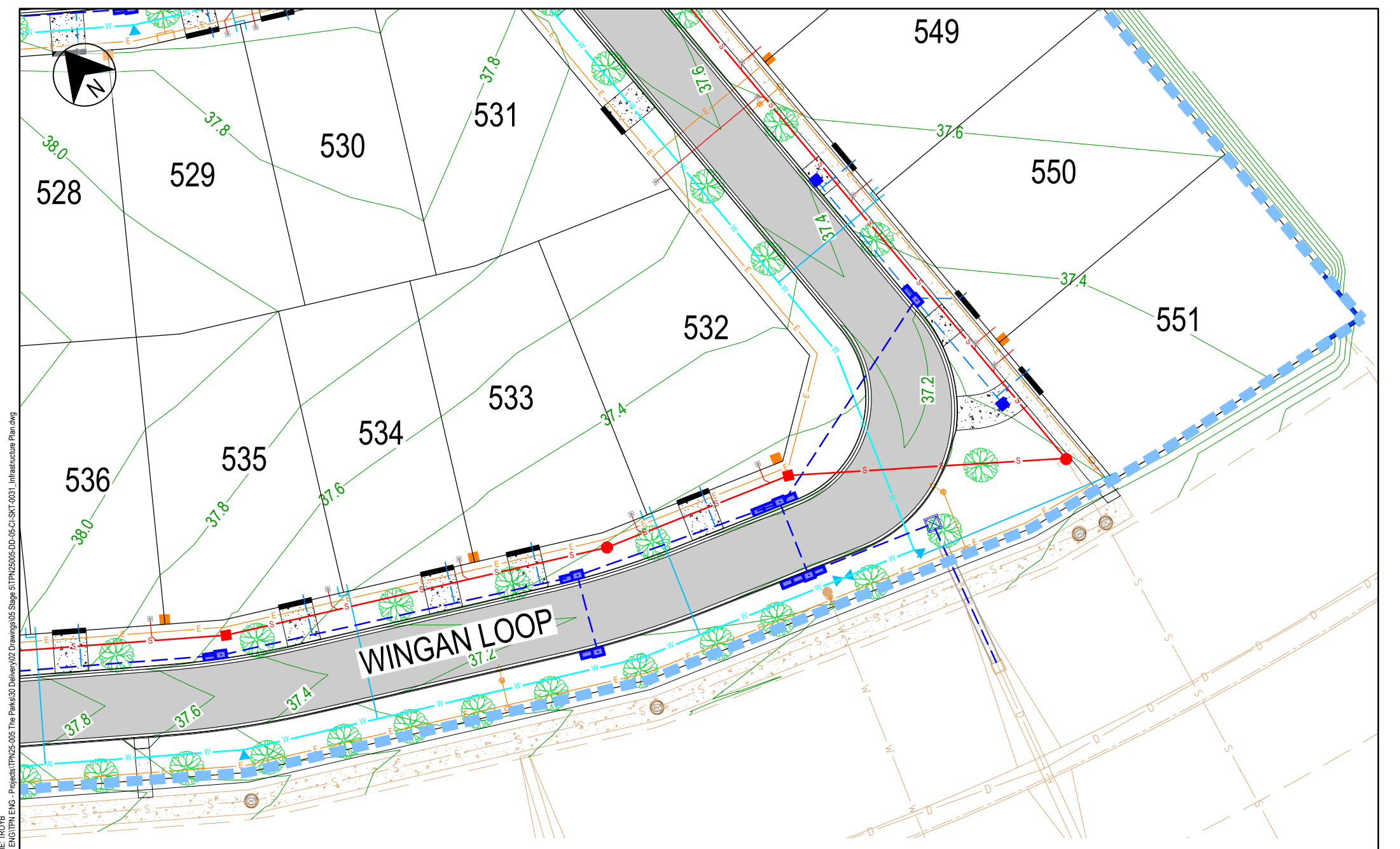
**DISCLAIMER**  
 THESE PLANS AND DRAWINGS ARE FOR CONCEPTUAL AND ILLUSTRATIVE PURPOSES ONLY. ALL DIMENSIONS, EASEMENTS, LEVELS AND SPECIFICATIONS ARE APPROXIMATE AND SUBJECT TO MODIFICATION, SUBSTITUTION, OR CHANGE WITHOUT PRIOR NOTICE.  
 NO RELIANCE SHOULD BE PLACED ON THESE PLANS FOR FINAL DECISIONS REGARDING PURCHASING, DESIGN, OR CONSTRUCTION. HOLTZE LAND COMPANY PTY LTD DISCLAIMS ALL LIABILITY FOR ANY ERRORS, OMISSIONS, OR INACCURACIES CONTAINED HEREIN, AND ACCEPTS NO LIABILITY FOR LOSS SUFFERED BY ANY PERSON WHO RELIES ON THIS PLAN.

**LEGEND**

- STORMWATER DRAINAGE
- WATER RETICULATION
- SEWERAGE
- ELECTRICAL

ELECTRICAL PILLAR & COMMS LEAD IN CONDUIT  
 3.5m WIDE NOM. DRIVEWAY





DATE: 15/04/2026 2:31:33 PM LOGIN NAME: TROYB  
 LOCATION: C:\Users\TroyB\OneDrive - TPN ENGIN\TPN ENGIN - Projects\TPN25-005 The Parks30 Delivery\02 Drawings\05 Stage 5\TPN25005-DD-05-CI-SKT-0031\_Infrastructure Plan.dwg

PROJECT  
**THE PARKS - STAGE 5**  
 TITLE  
**FIORDLAND/TONGARIRO PARK RELEASE**  
**INFRASTRUCTURE MASTER SERVICES**  
 DATE 15.04.26 SCALE AS SHOWN PROJ. No. TPN25-005 REV. P7



**DISCLAIMER**  
 THESE PLANS AND DRAWINGS ARE FOR CONCEPTUAL AND ILLUSTRATIVE PURPOSES ONLY. ALL DIMENSIONS, EASEMENTS, LEVELS AND SPECIFICATIONS ARE APPROXIMATE AND SUBJECT TO MODIFICATION, SUBSTITUTION, OR CHANGE WITHOUT PRIOR NOTICE.  
 NO RELIANCE SHOULD BE PLACED ON THESE PLANS FOR FINAL DECISIONS REGARDING PURCHASING, DESIGN, OR CONSTRUCTION. HOLTZE LAND COMPANY PTY LTD DISCLAIMS ALL LIABILITY FOR ANY ERRORS, OMISSIONS, OR INACCURACIES CONTAINED HEREIN AND ACCEPTS NO LIABILITY FOR LOSS SUFFERED BY ANY PERSON WHO RELIES ON THIS PLAN.

**LEGEND**

	STORMWATER DRAINAGE
	WATER RETICULATION
	SEWERAGE
	ELECTRICAL

ELECTRICAL PILLAR & COMMS LEAD IN CONDUIT  
 3.5m WIDE NOM. DRIVEWAY

