



STAGE 9

STAGE 7

STAGE 6

STAGE 4

9004 ACTIVE PARK

9005 DOG PARK

SALSOLA STREET

CAPPARIS CRES

LALWA STREET

PROJECT  
**THE PARKS - STAGE 6**

TITLE  
**PENANG PARK RELEASE**

INFRASTRUCTURE MASTER SERVICES

DATE: 15.04.26 SCALE: AS SHOWN PROJ. No: TPN25-005 REV. P3



**DISCLAIMER**  
 THESE PLANS AND DRAWINGS ARE FOR CONCEPTUAL AND ILLUSTRATIVE PURPOSES ONLY. ALL DIMENSIONS, EASEMENTS, LEVELS AND SPECIFICATIONS ARE APPROXIMATE AND SUBJECT TO MODIFICATION, SUBSTITUTION, OR CHANGE WITHOUT PRIOR NOTICE.  
 NO RELIANCE SHOULD BE PLACED ON THESE PLANS FOR FINAL DECISIONS REGARDING PURCHASING, DESIGN, OR CONSTRUCTION. HOLTZE LAND COMPANY PTY LTD DISCLAIMS ALL LIABILITY FOR ANY ERRORS, OMISSIONS, OR INACCURACIES CONTAINED HEREIN AND ACCEPTS NO LIABILITY FOR LOSS SUFFERED BY ANY PERSON WHO RELIES ON THIS PLAN.

**LEGEND**

- STORMWATER DRAINAGE
- WATER RETICULATION
- SEWERAGE
- ELECTRICAL

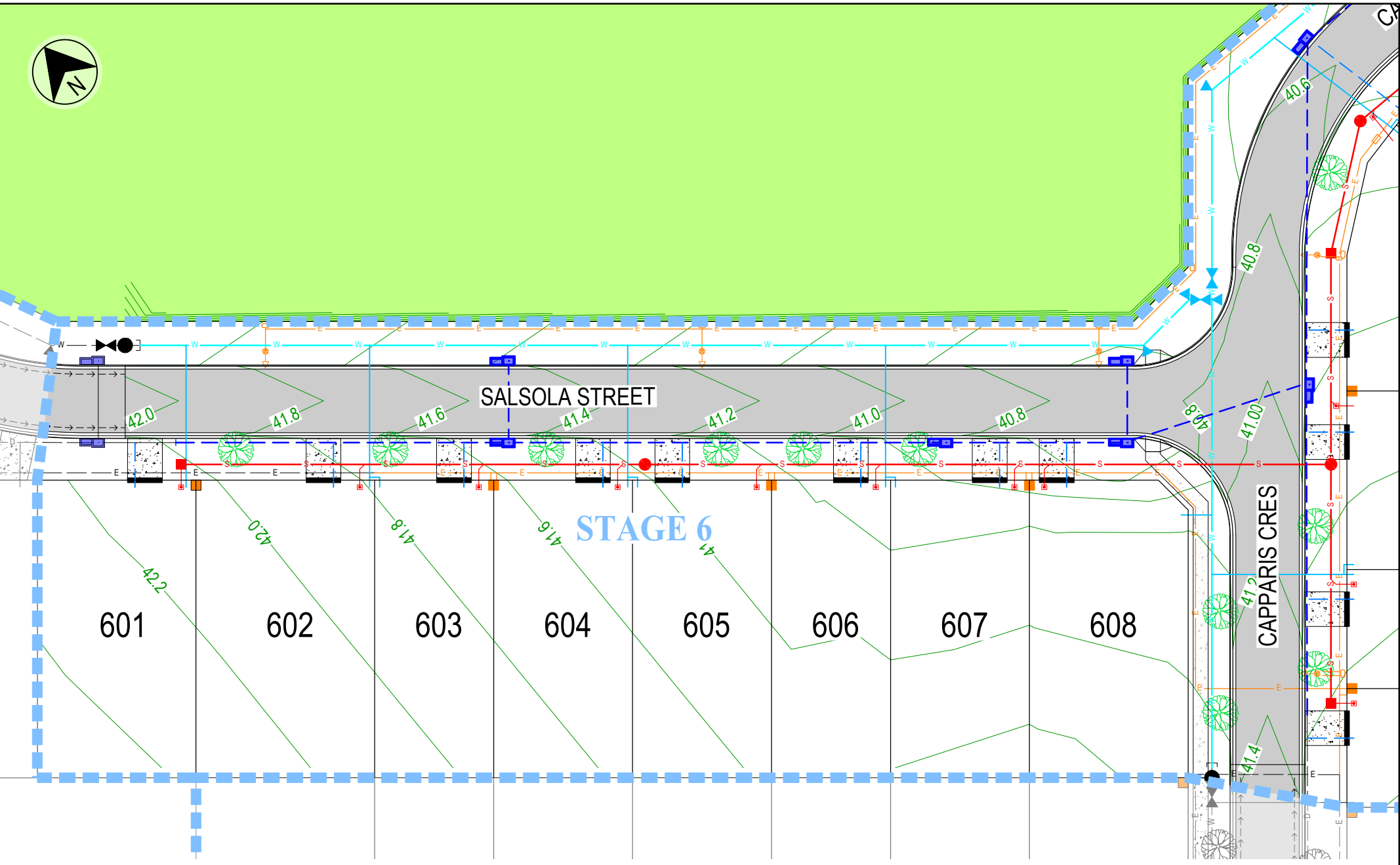
ELECTRICAL PILLAR & COMMS LEAD IN CONDUIT  
 3.5m WIDE NOM. DRIVEWAY



DATE: 15/04/2026 2:35:52 PM LOGIN NAME: TROYB LOCATION: C:\astro\p\OneDrive - TPN\ENGIN\TPN - Projects\TPN25-005 The Parks\30 Drawings\06 Stage 6\TPN25005-DD-06-CI-SKT-0031\_Infrastructure Plan.dwg



DATE: 15/04/2026 2:35:54 PM LOGIN NAME: TROYB  
LOCATION: c:\Users\roy@OneDrive - TPN\ENGIN\TPN - Projects\TPN25-005 - Projects\TPN25-005 Stage 6\TPN25005-DD-06-CI-SKT-0031 - Infrastructure Plan.dwg



PROJECT  
**THE PARKS - STAGE 6**

TITLE  
**PENANG PARK RELEASE**

INFRASTRUCTURE MASTER SERVICES

DATE: 15.04.26 SCALE: AS SHOWN PROJ. No: TPN25-005 REV. P3

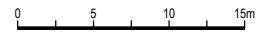


**DISCLAIMER**  
 THESE PLANS AND DRAWINGS ARE FOR CONCEPTUAL AND ILLUSTRATIVE PURPOSES ONLY. ALL DIMENSIONS, EASEMENTS, LEVELS AND SPECIFICATIONS ARE APPROXIMATE AND SUBJECT TO MODIFICATION, SUBSTITUTION, OR CHANGE WITHOUT PRIOR NOTICE.  
 NO RELIANCE SHOULD BE PLACED ON THESE PLANS FOR FINAL DECISIONS REGARDING PURCHASING, DESIGN, OR CONSTRUCTION. HOLTZE LAND COMPANY PTY LTD DISCLAIMS ALL LIABILITY FOR ANY ERRORS, OMISSIONS, OR INACCURACIES CONTAINED HEREIN AND ACCEPTS NO LIABILITY FOR LOSS SUFFERED BY ANY PERSON WHO RELIES ON THIS PLAN.

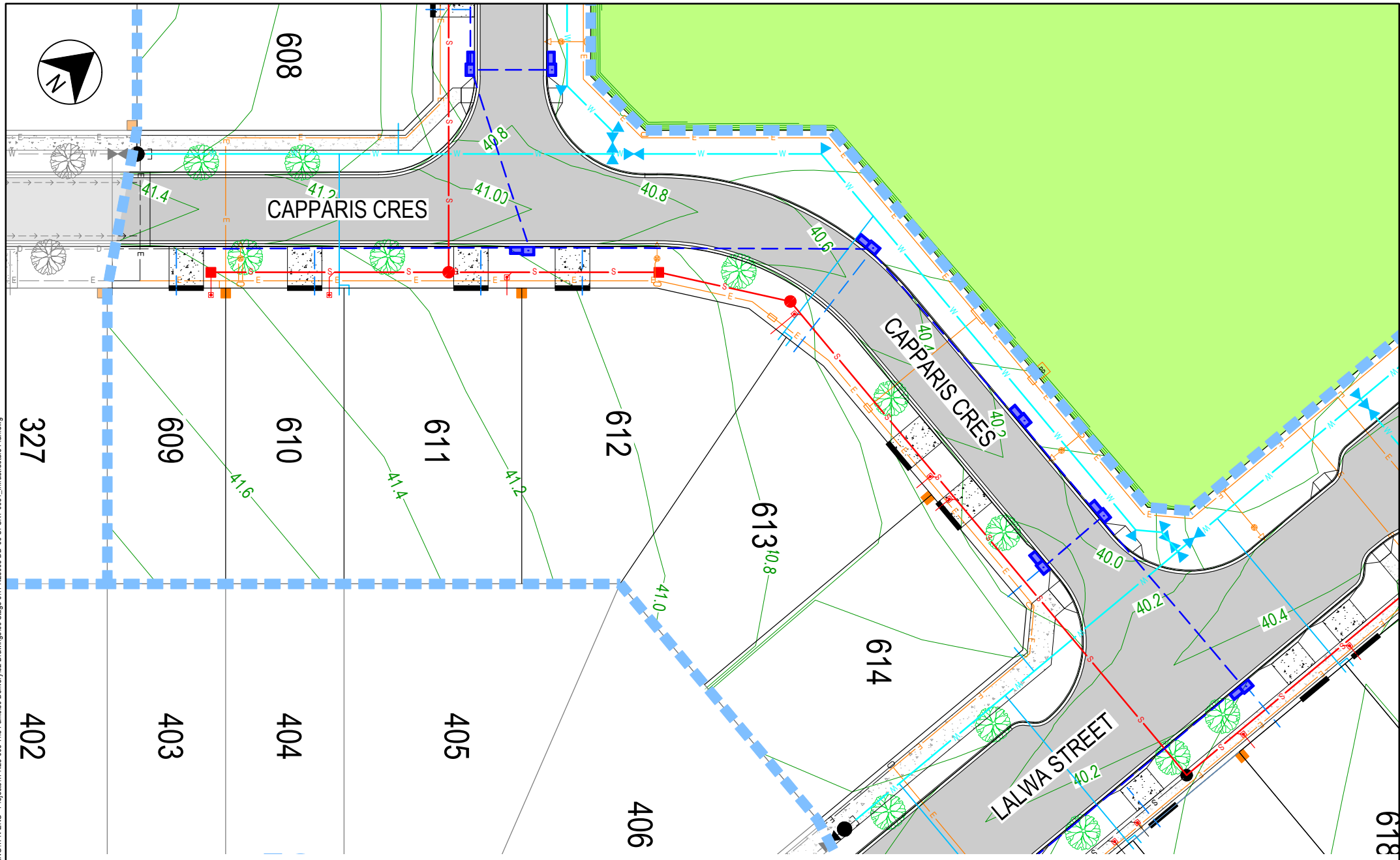
**LEGEND**

- STORMWATER DRAINAGE
- WATER RETICULATION
- SEWERAGE
- ELECTRICAL

ELECTRICAL PILLAR & COMMS LEAD IN CONDUIT  
3.5m WIDE NOM. DRIVEWAY



DATE: 15/04/2026 2:35:56 PM LOGIN NAME: TROYB  
 LOCATION: c:\Users\roy@OneDrive - TPN\ENGIN\ENG - Projects\TPN25-005 - The Parks\30 Delivery\02 Drawings\06 Stage 6\TPN25005-00-06-CI-SKT-0031\_Infrastructure Plan.dwg



PROJECT  
**THE PARKS - STAGE 6**  
 TITLE  
**PENANG PARK RELEASE**  
 INFRASTRUCTURE MASTER SERVICES

DATE: 15.04.26 SCALE: AS SHOWN PROJ. No: TPN25-005 REV. P3

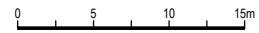


**DISCLAIMER**  
 THESE PLANS AND DRAWINGS ARE FOR CONCEPTUAL AND ILLUSTRATIVE PURPOSES ONLY. ALL DIMENSIONS, EASEMENTS, LEVELS AND SPECIFICATIONS ARE APPROXIMATE AND SUBJECT TO MODIFICATION, SUBSTITUTION, OR CHANGE WITHOUT PRIOR NOTICE.  
 NO RELIANCE SHOULD BE PLACED ON THESE PLANS FOR FINAL DECISIONS REGARDING PURCHASING, DESIGN, OR CONSTRUCTION. HOLTZE LAND COMPANY PTY LTD DISCLAIMS ALL LIABILITY FOR ANY ERRORS, OMISSIONS, OR INACCURACIES CONTAINED HEREIN AND ACCEPTS NO LIABILITY FOR LOSS SUFFERED BY ANY PERSON WHO RELIES ON THIS PLAN.

**LEGEND**

	STORMWATER DRAINAGE
	WATER RETICULATION
	SEWERAGE
	ELECTRICAL

ELECTRICAL PILLAR & COMMS LEAD IN CONDUIT  
 3.5m WIDE NOM. DRIVEWAY





701

621

620

619

618

617

616

615

407

LALWA STREET

614

406

DATE: 15/04/2026 2:35:57 PM LOGIN NAME: TROYB LOCATION: c:\User\astroj\OneDrive - TPN\ENGIN\ - Projects\TPN25-005 - The Parks\30 Delivery\02 Drawings\06 Stage 6\TPN25005-DD-06-CI-SK-0031 - Infrastructure Plan.dwg

PROJECT  
**THE PARKS - STAGE 6**

TITLE  
**PENANG PARK RELEASE**

INFRASTRUCTURE MASTER SERVICES

DATE: 15.04.26 SCALE: AS SHOWN PROJ. No: TPN25-005 REV. P3



**DISCLAIMER**

THESE PLANS AND DRAWINGS ARE FOR CONCEPTUAL AND ILLUSTRATIVE PURPOSES ONLY. ALL DIMENSIONS, EASEMENTS, LEVELS AND SPECIFICATIONS ARE APPROXIMATE AND SUBJECT TO MODIFICATION, SUBSTITUTION, OR CHANGE WITHOUT PRIOR NOTICE.

NO RELIANCE SHOULD BE PLACED ON THESE PLANS FOR FINAL DECISIONS REGARDING PURCHASING, DESIGN, OR CONSTRUCTION. HOLTZE LAND COMPANY PTY LTD DISCLAIMS ALL LIABILITY FOR ANY ERRORS, OMISSIONS, OR INACCURACIES CONTAINED HEREIN AND ACCEPTS NO LIABILITY FOR LOSS SUFFERED BY ANY PERSON WHO RELIES ON THIS PLAN.

**LEGEND**

- STORMWATER DRAINAGE
- WATER RETICULATION
- SEWERAGE
- ELECTRICAL

ELECTRICAL PILLAR & COMMS LEAD IN CONDUIT

3.5m WIDE NOM. DRIVEWAY

