



STAGE 12

STAGE 11

STAGE 10

901

902

903

904

905

906

907

908

909

910

911

912

913

914

915

916

917

918

919

920

921

922

923

924

925

926

927

928

929

9006

930

931

STAGE 9B

9004

STAGE 9A

EXISTING STAGE 7A

EXISTING STAGE 8

EXISTING STAGE 3

EXISTING STAGE 6

PROJECT
THE PARKS - STAGE 9

TITLE
**HOLCOMBE PARK RELEASE
INFRASTRUCTURE MASTER SERVICES**

DATE: 24.06.26 SCALE: AS SHOWN PROJ. No: TPN25-005 REV. P3



DISCLAIMER
 THESE PLANS AND DRAWINGS ARE FOR CONCEPTUAL AND ILLUSTRATIVE PURPOSES ONLY. ALL DIMENSIONS, EASEMENTS, LEVELS AND SPECIFICATIONS ARE APPROXIMATE AND SUBJECT TO MODIFICATION, SUBSTITUTION, OR CHANGE WITHOUT PRIOR NOTICE.
 NO RELIANCE SHOULD BE PLACED ON THESE PLANS FOR FINAL DECISIONS REGARDING PURCHASING, DESIGN, OR CONSTRUCTION. HOLTZE LAND COMPANY PTY LTD DISCLAIMS ALL LIABILITY FOR ANY ERRORS, OMISSIONS, OR INACCURACIES CONTAINED HEREIN AND ACCEPTS NO LIABILITY FOR LOSS SUFFERED BY ANY PERSON WHO RELIES ON THIS PLAN.

LEGEND

	STORMWATER DRAINAGE
	WATER RETICULATION
	SEWERAGE
	ELECTRICAL



ELECTRICAL PILLAR & COMMS LEAD IN CONDUIT
 3.5m WIDE NOM. DRIVEWAY

DATE: 24/06/2026 1:39:35 PM LOGIN NAME: TROYB
 LOCATION: C:\Users\TroyB\OneDrive - TPN\ENGIN\TPM - Projects\TPN25-005 - The Parks\30 Delivery\02 Drawings\09 Stage 9\TPN25005-DD-09-CI-SKT-0031 - Infrastructure Plan.dwg



SENNA STREET

901

902

903

904

905

906

GREENANT PARADE

DATE: 24/06/2026 1:39:37 PM LOGIN NAME: TROYB LOCATION: C:\Users\TroyB\OneDrive - TPN ENGINEERING - Projects\TPN25-005 - The Parks30 Delivery\02 Drawings\09 Stage 9\TPN25005-DD-09-CI-SKT-0031_Infrastructure Plan.dwg

PROJECT
THE PARKS - STAGE 9

TITLE
HOLCOMBE PARK RELEASE

INFRASTRUCTURE MASTER SERVICES

DATE: 24.06.26 SCALE: AS SHOWN PROJ. No: TPN25-005 REV. P3



DISCLAIMER

THESE PLANS AND DRAWINGS ARE FOR CONCEPTUAL AND ILLUSTRATIVE PURPOSES ONLY. ALL DIMENSIONS, EASEMENTS, LEVELS AND SPECIFICATIONS ARE APPROXIMATE AND SUBJECT TO MODIFICATION, SUBSTITUTION, OR CHANGE WITHOUT PRIOR NOTICE.

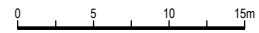
NO RELIANCE SHOULD BE PLACED ON THESE PLANS FOR FINAL DECISIONS REGARDING PURCHASING, DESIGN, OR CONSTRUCTION. HOLTZE LAND COMPANY PTY LTD DISCLAIMS ALL LIABILITY FOR ANY ERRORS, OMISSIONS, OR INACCURACIES CONTAINED HEREIN AND ACCEPTS NO LIABILITY FOR LOSS SUFFERED BY ANY PERSON WHO RELIES ON THIS PLAN.

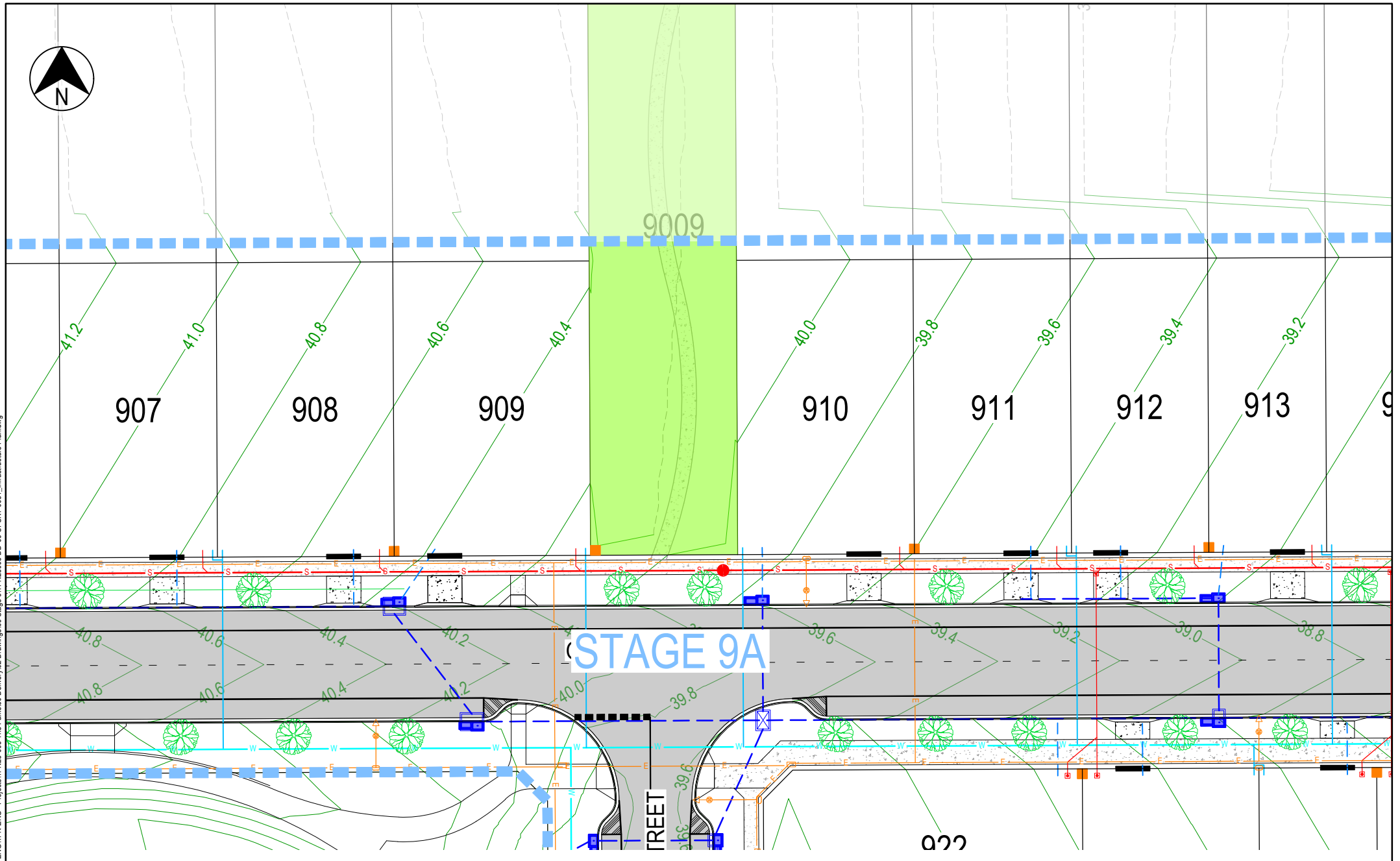
LEGEND

- STORMWATER DRAINAGE
- WATER RETICULATION
- SEWERAGE
- ELECTRICAL

ELECTRICAL PILLAR & COMMS LEAD IN CONDUIT

3.5m WIDE NOM. DRIVEWAY





DATE: 24/06/2026 1:39:38 PM LOGIN NAME: TROYB
LOCATION: C:\Users\TroyB\OneDrive - TPN\ENGIN\ENG - Projects\TPN25-005 - The Parks30 Delivery\02 Drawings\09 Stage 9\TPN25005-DD-09-CI-SKT-0031_Infrastructure Plan.dwg

PROJECT
THE PARKS - STAGE 9

TITLE
**HOLCOMBE PARK RELEASE
INFRASTRUCTURE MASTER SERVICES**

DATE: 24.06.26 SCALE: AS SHOWN PROJ. No: TPN25-005 REV. P3



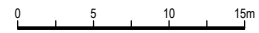
DISCLAIMER
THESE PLANS AND DRAWINGS ARE FOR CONCEPTUAL AND ILLUSTRATIVE PURPOSES ONLY. ALL DIMENSIONS, EASEMENTS, LEVELS AND SPECIFICATIONS ARE APPROXIMATE AND SUBJECT TO MODIFICATION, SUBSTITUTION, OR CHANGE WITHOUT PRIOR NOTICE.
NO RELIANCE SHOULD BE PLACED ON THESE PLANS FOR FINAL DECISIONS REGARDING PURCHASING, DESIGN, OR CONSTRUCTION. HOLTZE LAND COMPANY PTY LTD DISCLAIMS ALL LIABILITY FOR ANY ERRORS, OMISSIONS, OR INACCURACIES CONTAINED HEREIN AND ACCEPTS NO LIABILITY FOR LOSS SUFFERED BY ANY PERSON WHO RELIES ON THIS PLAN.

LEGEND

	STORMWATER DRAINAGE
	WATER RETICULATION
	SEWERAGE
	ELECTRICAL

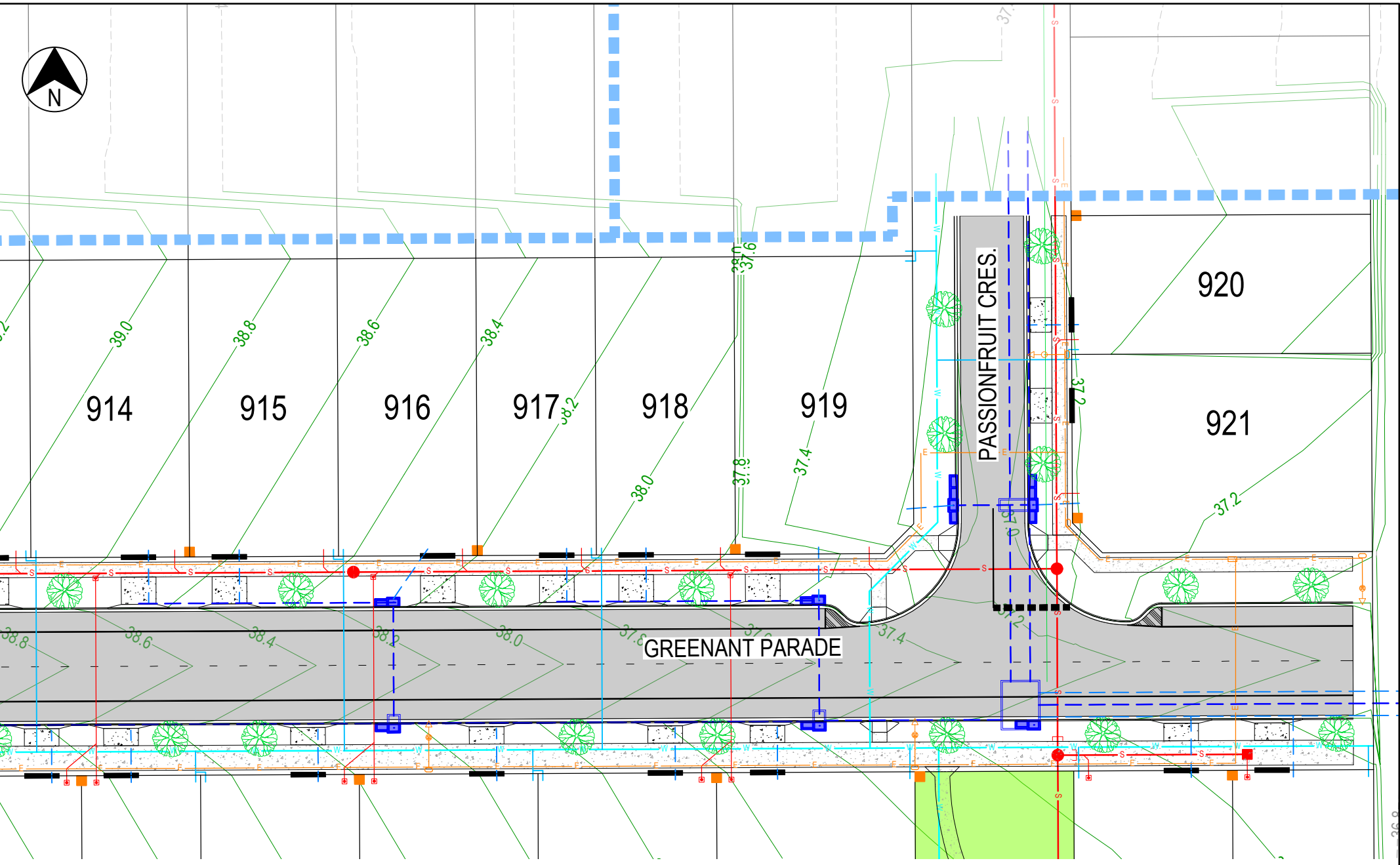


ELECTRICAL PILLAR & COMMS LEAD IN CONDUIT
3.5m WIDE NOM. DRIVEWAY





DATE: 24/06/2026 1:39:40 PM LOGIN NAME: TROYB
LOCATION: C:\Users\troyb\OneDrive - TPN ENGINTECH\Documents\Projects\TPN25-005 The Parks\30 Delivery\02 Drawings\09 Stage 9\TPN25005-DD-09-CI-SKT-0031_Infrastructure Plan.dwg



PROJECT
THE PARKS - STAGE 9

TITLE
**HOLCOMBE PARK RELEASE
INFRASTRUCTURE MASTER SERVICES**

DATE: 24.06.26 SCALE: AS SHOWN PROJ. No: TPN25-005 REV. P3



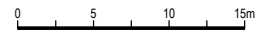
DISCLAIMER
THESE PLANS AND DRAWINGS ARE FOR CONCEPTUAL AND ILLUSTRATIVE PURPOSES ONLY. ALL DIMENSIONS, EASEMENTS, LEVELS AND SPECIFICATIONS ARE APPROXIMATE AND SUBJECT TO MODIFICATION, SUBSTITUTION, OR CHANGE WITHOUT PRIOR NOTICE.
NO RELIANCE SHOULD BE PLACED ON THESE PLANS FOR FINAL DECISIONS REGARDING PURCHASING, DESIGN, OR CONSTRUCTION. HOLTZE LAND COMPANY PTY LTD DISCLAIMS ALL LIABILITY FOR ANY ERRORS, OMISSIONS, OR INACCURACIES CONTAINED HEREIN AND ACCEPTS NO LIABILITY FOR LOSS SUFFERED BY ANY PERSON WHO RELIES ON THIS PLAN.

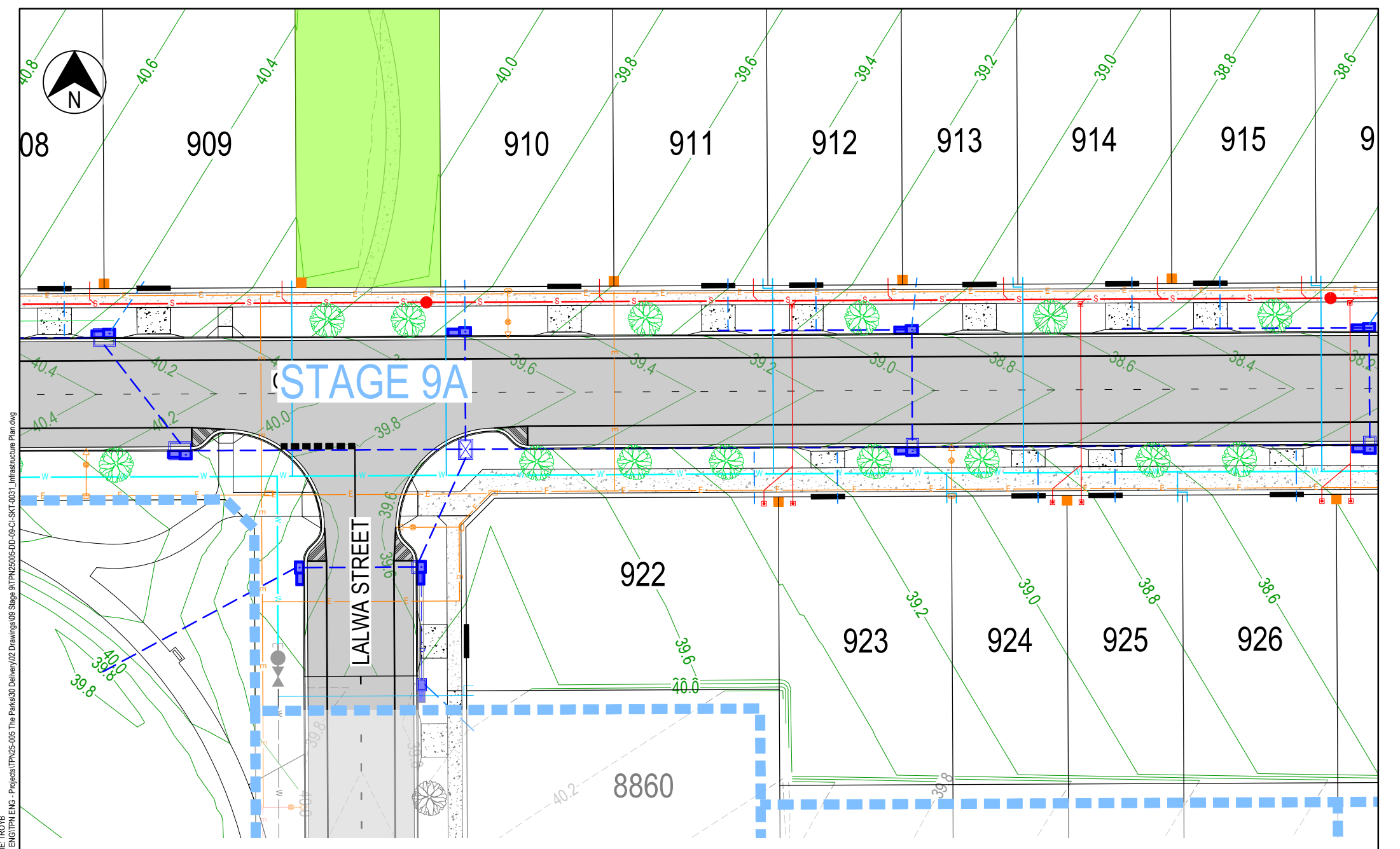
LEGEND

	STORMWATER DRAINAGE
	WATER RETICULATION
	SEWERAGE
	ELECTRICAL



ELECTRICAL PILLAR & COMMS LEAD IN CONDUIT
3.5m WIDE NOM. DRIVEWAY





DATE: 24/06/2026 1:39:41 PM LOGIN NAME: TROYB
 LOCATION: c:\Users\troyb\OneDrive - TPN ENGINTECH ENG - Projects\TPN25-005 The Parks\30 Delivery\02 Drawings\09 Stage 9\TPN25005-DD-09-CI-SKT-001 Infrastructure Plan.dwg

PROJECT
THE PARKS - STAGE 9
 TITLE
HOLCOMBE PARK RELEASE
INFRASTRUCTURE MASTER SERVICES
 DATE: 24.06.26 SCALE: AS SHOWN PROJ. No: TPN25-005 REV. P3



DISCLAIMER
 THESE PLANS AND DRAWINGS ARE FOR CONCEPTUAL AND ILLUSTRATIVE PURPOSES ONLY. ALL DIMENSIONS, EASEMENTS, LEVELS AND SPECIFICATIONS ARE APPROXIMATE AND SUBJECT TO MODIFICATION, SUBSTITUTION, OR CHANGE WITHOUT PRIOR NOTICE.
 NO RELIANCE SHOULD BE PLACED ON THESE PLANS FOR FINAL DECISIONS REGARDING PURCHASING, DESIGN, OR CONSTRUCTION. HOLTZE LAND COMPANY PTY LTD DISCLAIMS ALL LIABILITY FOR ANY ERRORS, OMISSIONS, OR INACCURACIES CONTAINED HEREIN AND ACCEPTS NO LIABILITY FOR LOSS SUFFERED BY ANY PERSON WHO RELIES ON THIS PLAN.

LEGEND
 STORMWATER DRAINAGE
 WATER RETICULATION
 SEWERAGE
 ELECTRICAL
 ELECTRICAL PILLAR & COMMS LEAD IN CONDUIT
 3.5m WIDE NOM. DRIVEWAY





915

916

917

918

919

921

920

GREENANT PARADE

PASSIONFRUIT CRE

TAYLOR ROAD

926

927

928

929

9006

930

931

PROJECT
THE PARKS - STAGE 9

TITLE
**HOLCOMBE PARK RELEASE
INFRASTRUCTURE MASTER SERVICES**

DATE: 24.06.26 SCALE: AS SHOWN PROJ. No: TPN25-005 REV. P3



DISCLAIMER
THESE PLANS AND DRAWINGS ARE FOR CONCEPTUAL AND ILLUSTRATIVE PURPOSES ONLY. ALL DIMENSIONS, EASEMENTS, LEVELS AND SPECIFICATIONS ARE APPROXIMATE AND SUBJECT TO MODIFICATION, SUBSTITUTION, OR CHANGE WITHOUT PRIOR NOTICE.

NO RELIANCE SHOULD BE PLACED ON THESE PLANS FOR FINAL DECISIONS REGARDING PURCHASING, DESIGN, OR CONSTRUCTION. HOLTZE LAND COMPANY PTY LTD DISCLAIMS ALL LIABILITY FOR ANY ERRORS, OMISSIONS, OR INACCURACIES CONTAINED HEREIN AND ACCEPTS NO LIABILITY FOR LOSS SUFFERED BY ANY PERSON WHO RELIES ON THIS PLAN.

LEGEND

- STORMWATER DRAINAGE
- WATER RETICULATION
- SEWERAGE
- ELECTRICAL

ELECTRICAL PILLAR & COMMS LEAD IN CONDUIT
3.5m WIDE NOM. DRIVEWAY

DATE: 24/06/2026 1:39:43 PM LOGIN NAME: TROYB LOCATION: C:\Users\TroyB\OneDrive - TPN\ENGIN\TPN - Projects\TPN25-005 - The Parks\30 Delivery\02 Drawings\09 Stage 9\TPN25005-DD-09-CI-SKT-0031 - Infrastructure Plan.dwg